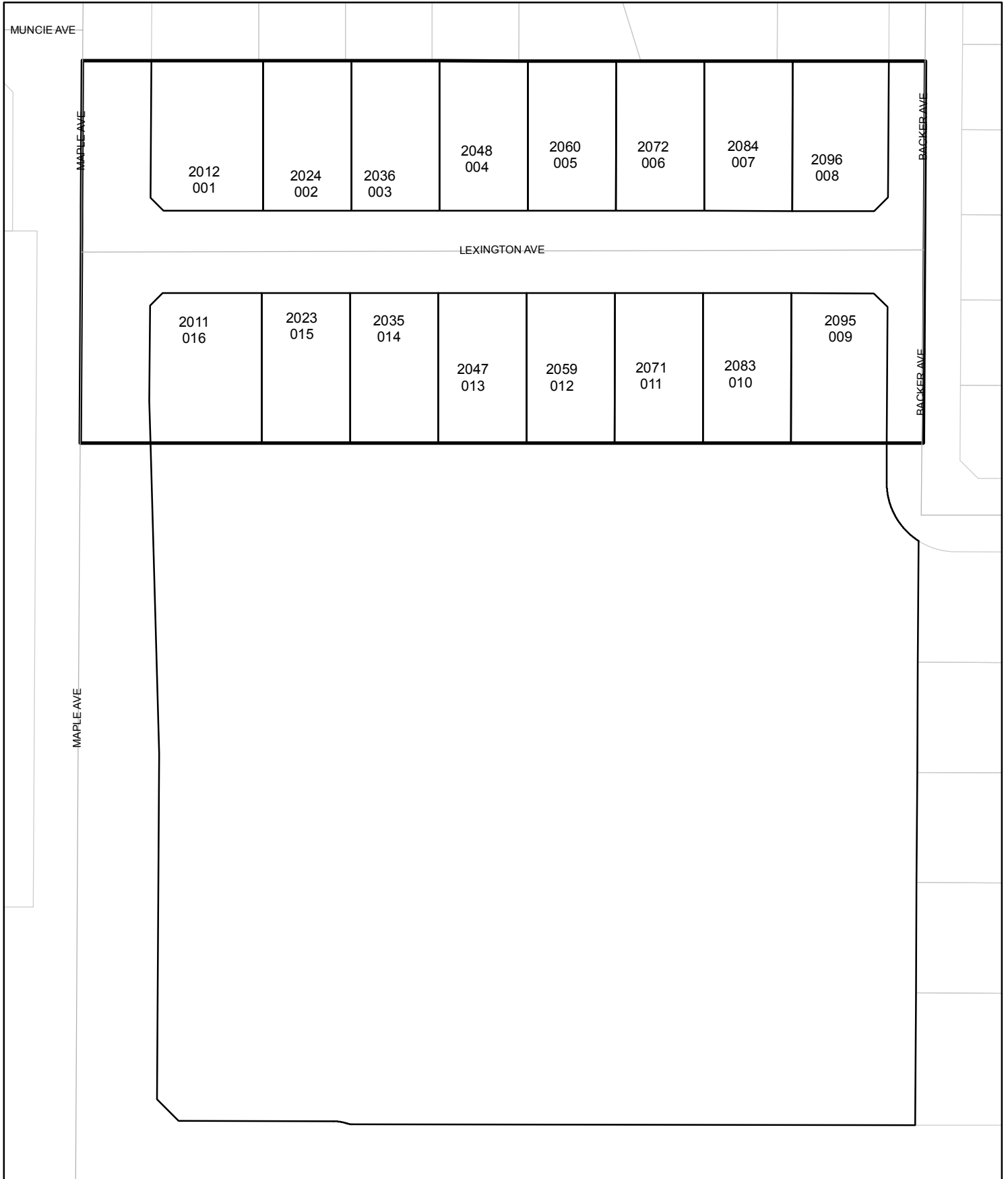




# Street Names, Addresses and (Lot Numbers) for T4607

Prepared on Wed Jun 07 00:05:42 2017



# TRACT NO. 4607

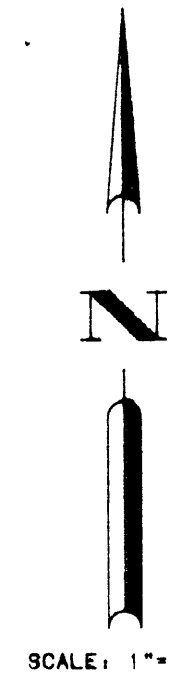
IN THE CITY OF FRESNO  
FRESNO COUNTY, CALIFORNIA  
SURVEYED AND PLATTED IN OCTOBER, 1995  
BY HANNA & HANNA, INC.  
CONSISTING OF 2 SHEETS  
SHEET 2 OF 2

**CURVE DATA:**

Curve Number	Delta	Radius	Arc Length	Tangent Length	Chord Bearing	Chord Length
CC01	18°11'41"	10.00'	3.18'	1.60'	N 81°08'07"W	3.16'
CC02	18°11'41"	30.00'	9.53'	4.80'	N 81°08'07"W	9.49'
CC03	57°51'54"	47.00'	47.47'	25.98'	N 28°56'28"W	46.48'
CC04	18°11'41"	10.00'	3.18'	1.60'	N 81°08'07"W	3.16'
CC05	18°11'41"	30.00'	9.53'	4.80'	N 81°08'07"W	9.49'
CC06	57°51'54"	47.00'	47.47'	25.98'	N 28°56'28"W	46.48'

**LINE DATA:**

Line Number	Bearing	Distance
L1	N 89°45'03"	8.15'
L2	N 89°45'03"	20.95'
L3	S 48°06'31"	20.60'
L4	S 48°06'31"	20.60'
L5	N 44°51'18"	12.95'
L6	S 48°09'23"	13.20'
L7	S 48°09'23"	13.22'
L8	N 89°41'48"	28.00'
L9	N 00°00'28"	26.70'

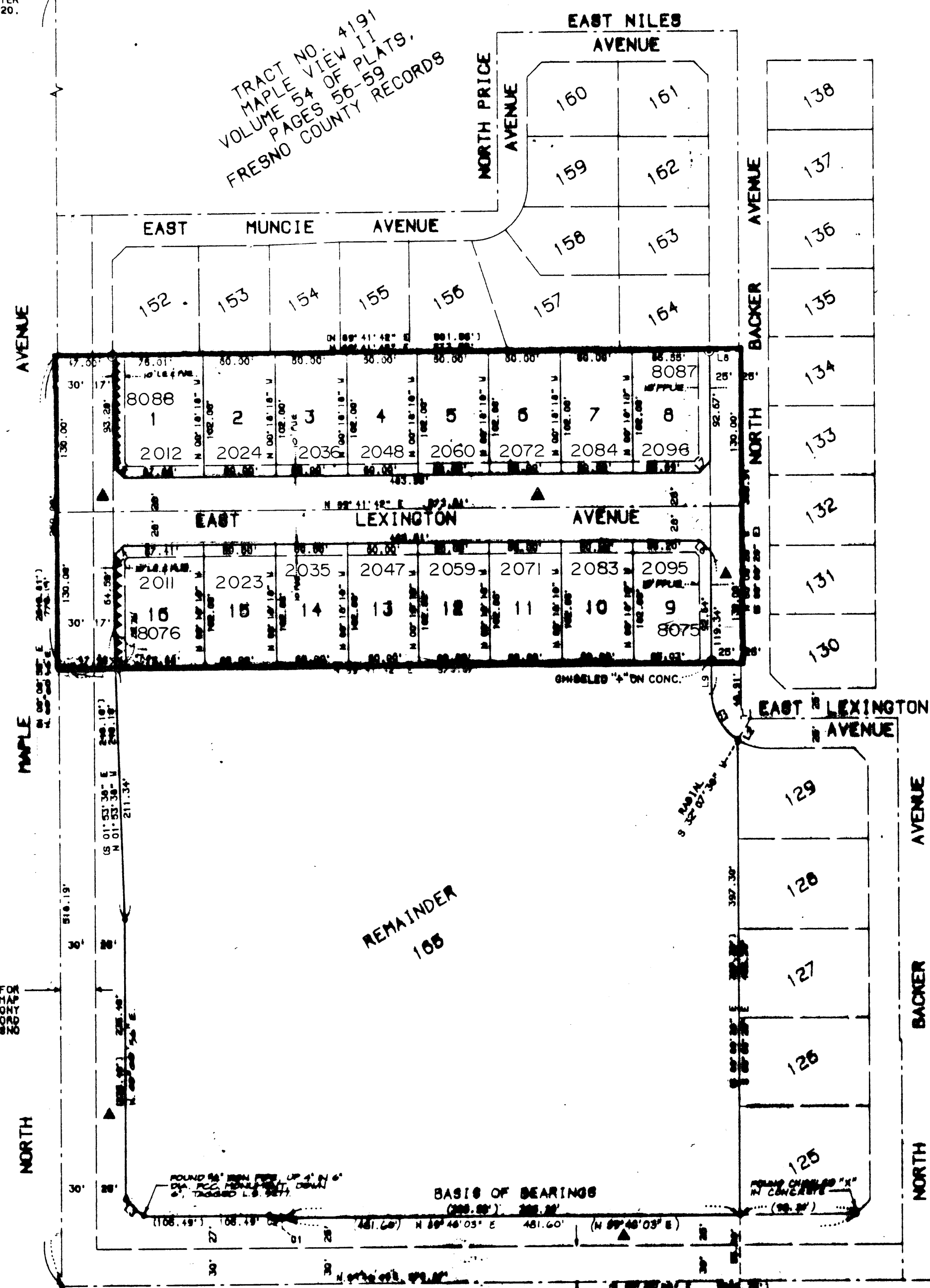


**LEGEND:**

- ( ) INDICATES RECORD DATA PER TRACT 4191, MAPLE VIEW II, ACCORDING TO THE MAP THEREOF RECORDED IN VOLUME 54 OF PLATS AT PAGES 54 THROUGH 58, FRESNO COUNTY RECORDS.
- FOUND 3/4" IRON PIPE, DOWN 6", TAGGED L.S. 8277, UNLESS NOTED OTHERWISE.
- FOUND 3/4" IRON PIPE, DOWN 6", TAGGED L.S. 8277, RESET WITH 3/4" IRON PIPE, 30" LONG, UP 4" IN 6" DIA. P.C.C. MONUMENT, DOWN 6", TAGGED L.S. 8277, UNLESS NOTED OTHERWISE.
- ▲ INDICATES SET 3/4" IRON PIPE, 30" LONG, UP 4" IN 6" DIA. P.C.C. MONUMENT, DOWN 6", TAGGED L.S. 8277, UNLESS NOTED OTHERWISE.
- ▲ INDICATES EASEMENT DESIGNATED FOR PUBLIC STREET PURPOSES PER TRACT NO. 4191, ACCORDING TO THE MAP THEREOF RECORDED IN VOLUME 54 OF PLATS AT PAGES 54 THROUGH 58, FRESNO COUNTY RECORDS.
- ▲ INDICATES NOW OFFERED FOR DEDICATION FOR PUBLIC STREET PURPOSES.
- PUE INDICATES PUBLIC UTILITY EASEMENT NOW OFFERED FOR DEDICATION FOR PUBLIC USE.
- LE INDICATES LANDSCAPE EASEMENT NOW OFFERED FOR DEDICATION FOR PUBLIC USE.
- PUE INDICATES PLUMBING AND PUBLIC UTILITY EASEMENT NOW OFFERED FOR DEDICATION FOR PUBLIC USE.
- INDICATES RELINQUISHMENT OF EASEMENT RIGHTS.
- THE BLUE BORDER INDICATES THE LIMITS OF THIS SUBDIVISION.

**BASIS OF BEARINGS:**

THE EAST 388.26 FEET OF THE SOUTH LINE OF LOT 168 AND THE SOUTH LINE OF LOT 125 OF TRACT NO. 4191, RECORDED JULY 27, 1995, IN VOLUME 54 OF PLATS AT PAGES 58, 57, 58, & 59, FRESNO COUNTY RECORDS WAS TAKEN TO BEAR NORTH 89°45'03" EAST.



POSITION FOR THE WEST QUARTER CORNER OF SECTION 25, 12/20.

TRACT NO: 4191  
MAPLE VIEW II  
VOLUME 54 OF PLATS  
PAGES 54-59  
FRESNO COUNTY RECORDS

30' PREVIOUSLY DEDICATED FOR PUBLIC STREET PURPOSES BY MAP OF GARFIELD PARK COLONY RECORDED IN BOOK 2 OF RECORD OF SURVEYS AT PAGE 68, FRESNO COUNTY RECORDS.

THE SOUTHWEST CORNER OF SECTION 25, 12/20, POSITION FALLS ON MANHOLE. TIES ON FILE WITH FRESNO COUNTY SURVEYOR, ON 4190.

30' PREVIOUSLY DEDICATED FOR PUBLIC STREET PURPOSES BY MAP OF GARFIELD PARK COLONY RECORDED IN BOOK 2 OF RECORD OF SURVEYS AT PAGE 68, FRESNO COUNTY RECORDS.

POSITION FOR THE SOUTH QUARTER CORNER OF SECTION 25, 12/20.