



Street Names, Addresses and (Lot Numbers) for T4598

Prepared on Thu Feb 14 22:52:13 2019



TRACT NO. 4598

PHASE I OF TENTATIVE TRACT NO. 4598
IN THE CITY OF FRESNO, COUNTY OF FRESNO, STATE OF CALIFORNIA
SURVEYED AND PLATTED IN NOVEMBER 2002, BY GARY G. GIANNETTA
SHEET TWO OF TWO SHEETS

LEGEND:

- MONUMENT FOUND AND ACCEPTED AS NOTED
- SET 3/4" IRON PIPE, 30" LONG, 6" DOWN BELOW GROUND, TAGGED R.C.E. 26996
- ⊙ SET 3/4" IRON PIPE, 30" LONG, 4" UP IN 6" DIAMETER x 30" P.C.C. MONUMENT, DOWN 6" BELOW GROUND, TAGGED R.C.E. 26996
- ▲ NOW OFFERED FOR DEDICATION FOR PUBLIC STREET PURPOSES
- INDICATES RELINQUISHMENT OF DIRECT ACCESS RIGHTS
- () RECORD DATA AS PER MAP OF TRACT NO. 1784, SUNNYSIDE GARDENS NO. 3, RECORDED IN VOLUME 20, PAGE 38 OF PLATS, FRESNO COUNTY RECORDS
- [] RECORD DATA AS PER RECORD OF SURVEY, RECORDED IN BOOK 38, PAGE 15 OF RECORD OF SURVEYS, FRESNO COUNTY RECORDS
- (CALC) CALCULATED FROM RECORD DATA
- F.C.R. FRESNO COUNTY RECORDS
- LE LANDSCAPE EASEMENT NOW OFFERED FOR DEDICATION FOR PUBLIC USE
- PE PEDESTRIAN EASEMENT NOW OFFERED FOR DEDICATION FOR PUBLIC USE
- PUE PUBLIC UTILITY EASEMENT NOW OFFERED FOR DEDICATION FOR PUBLIC USE
- BLUE BORDER INDICATES THE LIMITS OF THIS SUBDIVISION

NOTE:

- 1. SET 3/4" IRON PIPE, 6" DOWN, TAGGED RCE 26996 AT ALL LOT CORNERS

BASIS OF BEARINGS

THE WEST LINE OF THE SOUTHEAST QUARTER OF SECTION 10, TOWNSHIP 14 SOUTH, RANGE 21 EAST, MOUNT DIABLO BASE AND MERIDIAN, TAKEN AS BEARING SOUTH 0°06'00" EAST AS PER MAP OF SUNNYSIDE GARDENS NO. 3, TRACT NO. 1784 RECORDED IN VOLUME 20, PAGE 38 OF PLATS, FRESNO COUNTY RECORDS.

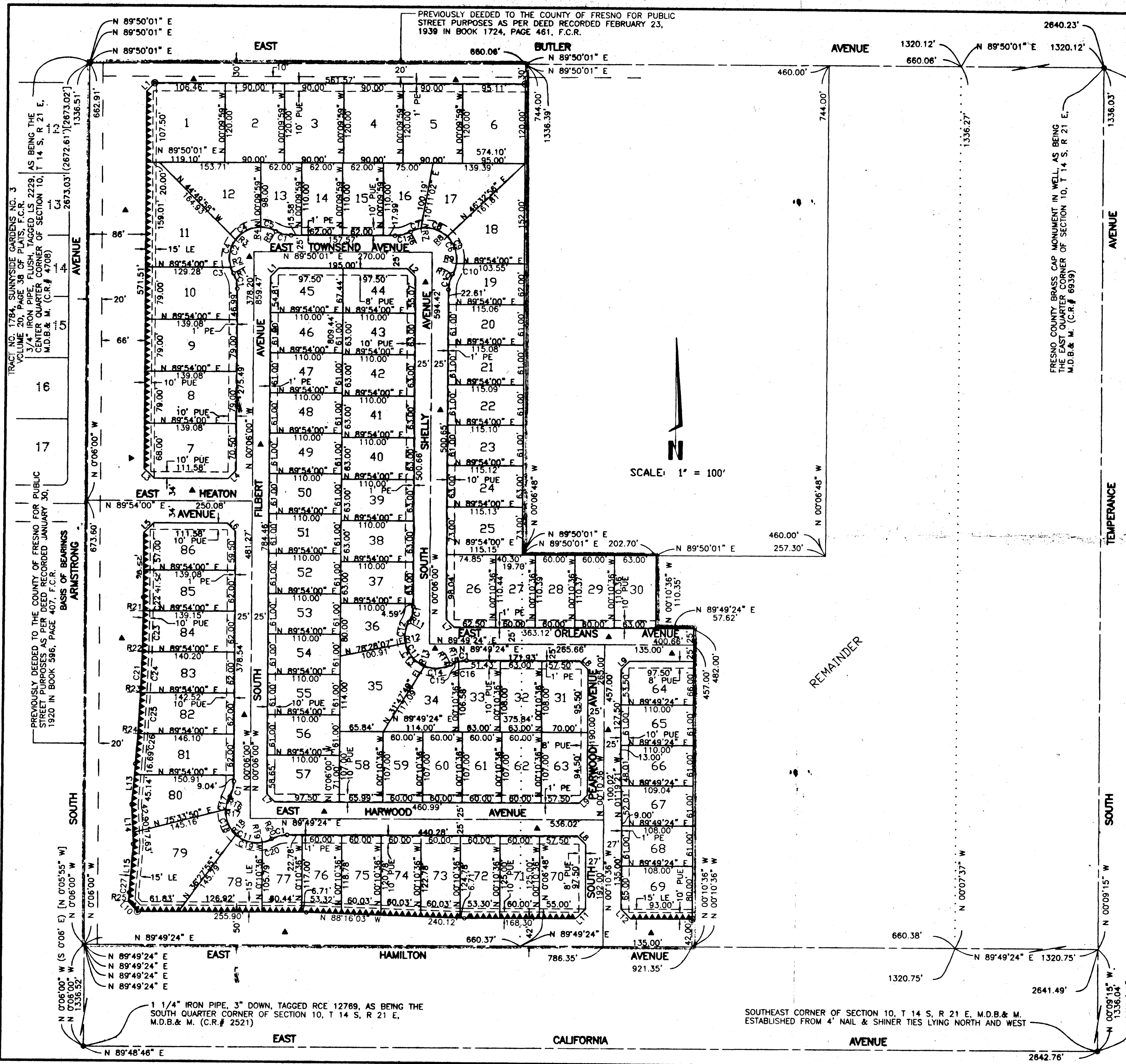
LINE	DIRECTION	DISTANCE
L1	N 44°52'01" E	17.69'
L2	N 45°07'59" W	17.67'
L3	N 45°06'00" W	21.21'
L4	N 44°54'00" E	17.68'
L5	N 44°54'00" E	21.21'
L6	N 45°06'00" W	17.68'
L7	N 45°08'18" W	17.67'
L8	N 45°10'36" W	17.68'
L9	N 44°49'24" E	17.68'
L10	N 42°58'18" W	20.38'
L11	N 44°49'24" E	21.21'
L12	N 45°10'36" W	21.21'
L13	N 4°39'02" E	61.83'
L14	N 2°56'40" W	60.53'
L15	N 4°39'02" E	73.52'

RADIAL	DIRECTION
R1	S 60°47'23" W
R2	S 72°18'11" W
R3	N 54°03'29" W
R4	N 00°25'10" W
R5	N 28°56'38" E
R6	N 29°16'36" W
R7	N 08°59'17" W
R8	N 43°23'36" E
R9	S 81°44'56" E
R10	S 60°59'22" E
R11	N 60°59'22" W
R12	S 78°37'06" W
R13	S 21°29'44" W
R14	S 28°17'14" E
R15	N 14°07'46" W
R16	N 60°59'22" W
R17	N 86°00'02" W
R18	S 41°39'33" W
R19	S 10°40'25" E
R20	S 29°17'14" E
R21	S 89°42'51" E
R22	S 88°32'45" E
R23	S 87°22'36" E
R24	S 86°12'24" E
R25	S 85°37'13" E

CURVE	RADIUS	LENGTH	TANGENT	DELTA
C1	48.00'	24.39'	12.46'	29°06'37"
C2	47.00'	121.53'	164.75'	148°09'15"
C3	47.00'	9.44'	4.74'	11°30'49"
C4	47.00'	44.00'	23.76'	53°38'19"
C5	47.00'	24.09'	12.31'	29°21'48"
C6	47.00'	121.64'	165.47'	148°17'14"
C7	47.00'	16.64'	8.41'	20°17'19"
C8	47.00'	42.97'	23.12'	52°22'53"
C9	47.00'	45.00'	24.39'	54°51'28"
C10	47.00'	17.03'	8.61'	20°45'34"
C11	47.00'	121.65'	165.53'	148°17'52"
C12	47.00'	33.13'	17.29'	40°23'31"
C13	47.00'	46.86'	25.58'	57°07'23"
C14	47.00'	41.86'	22.31'	50°48'58"
C15	48.00'	12.70'	6.39'	15°09'27"
C16	48.00'	11.69'	5.87'	13°57'10"
C17	47.00'	20.52'	10.42'	25°00'40"
C18	47.00'	42.93'	23.10'	52°20'25"
C19	47.00'	42.93'	23.09'	52°19'58"
C20	47.00'	15.27'	7.70'	18°36'49"
C21	3041.00'	252.14'	126.14'	4°45'02"
C22	3041.00'	20.48'	10.24'	0°23'09"
C23	3041.00'	62.01'	31.01'	1°10'06"
C24	3041.00'	62.05'	31.03'	1°10'09"
C25	3041.00'	62.10'	31.05'	1°10'12"
C26	3041.00'	45.50'	22.75'	0°51'26"
C27	2939.00'	13.89'	6.95'	0°16'15"

RECEIVED
MAR 10 2005

CITY OF FRESNO
BUILDING & SAFETY SERVICES



TRACT NO. 4598

PHASE I OF TENTATIVE TRACT NO. 4598
IN THE CITY OF FRESNO, COUNTY OF FRESNO, STATE OF CALIFORNIA
SURVEYED AND PLATTED IN NOVEMBER 2002, BY GARY G. GIANNETTA
SHEET TWO OF TWO SHEETS

LEGEND:

- MONUMENT FOUND AND ACCEPTED AS NOTED
- SET 3/4" IRON PIPE, 30" LONG, 6" DOWN BELOW GROUND, TAGGED R.C.E. 26996
- ⊙ SET 3/4" IRON PIPE, 30" LONG, 4" UP IN 6" DIAMETER x 30" P.C.C. MONUMENT, DOWN 6" BELOW GROUND, TAGGED R.C.E. 26996
- ▲ NOW OFFERED FOR DEDICATION FOR PUBLIC STREET PURPOSES
- ▲ PREVIOUSLY DEDICATED TO FRESNO METROPOLITAN FLOOD CONTROL DISTRICT FOR STORM DRAINAGE PIPELINE PURPOSES PER DOCUMENT RECORDED OCTOBER 12, 2004 AS DOC. NO. 20040230601, FRESNO COUNTY RECORDS
- ▲▲▲▲ INDICATES RELINQUISHMENT OF DIRECT ACCESS RIGHTS
- () RECORD DATA AS PER MAP OF TRACT NO. 1784, SUNNYSIDE GARDENS NO. 3, RECORDED IN VOLUME 20, PAGE 38 OF PLATS, FRESNO COUNTY RECORDS
- [] RECORD DATA AS PER RECORD OF SURVEY, RECORDED IN BOOK 38, PAGE 15 OF RECORD OF SURVEYS, FRESNO COUNTY RECORDS
- (CALC) CALCULATED FROM RECORD DATA
- F.C.R. FRESNO COUNTY RECORDS
- LE LANDSCAPE EASEMENT NOW OFFERED FOR DEDICATION FOR PUBLIC USE
- PE PEDESTRIAN EASEMENT NOW OFFERED FOR DEDICATION FOR PUBLIC USE
- PUE PUBLIC UTILITY EASEMENT NOW OFFERED FOR DEDICATION FOR PUBLIC USE
- PPUE PLANTING AND PUBLIC UTILITY EASEMENT NOW OFFERED FOR DEDICATION FOR PUBLIC USE
- BLUE BORDER INDICATES THE LIMITS OF THIS SUBDIVISION

NOTE:

1. SET 3/4" IRON PIPE, 6" DOWN, TAGGED RCE 26996 AT ALL LOT CORNERS

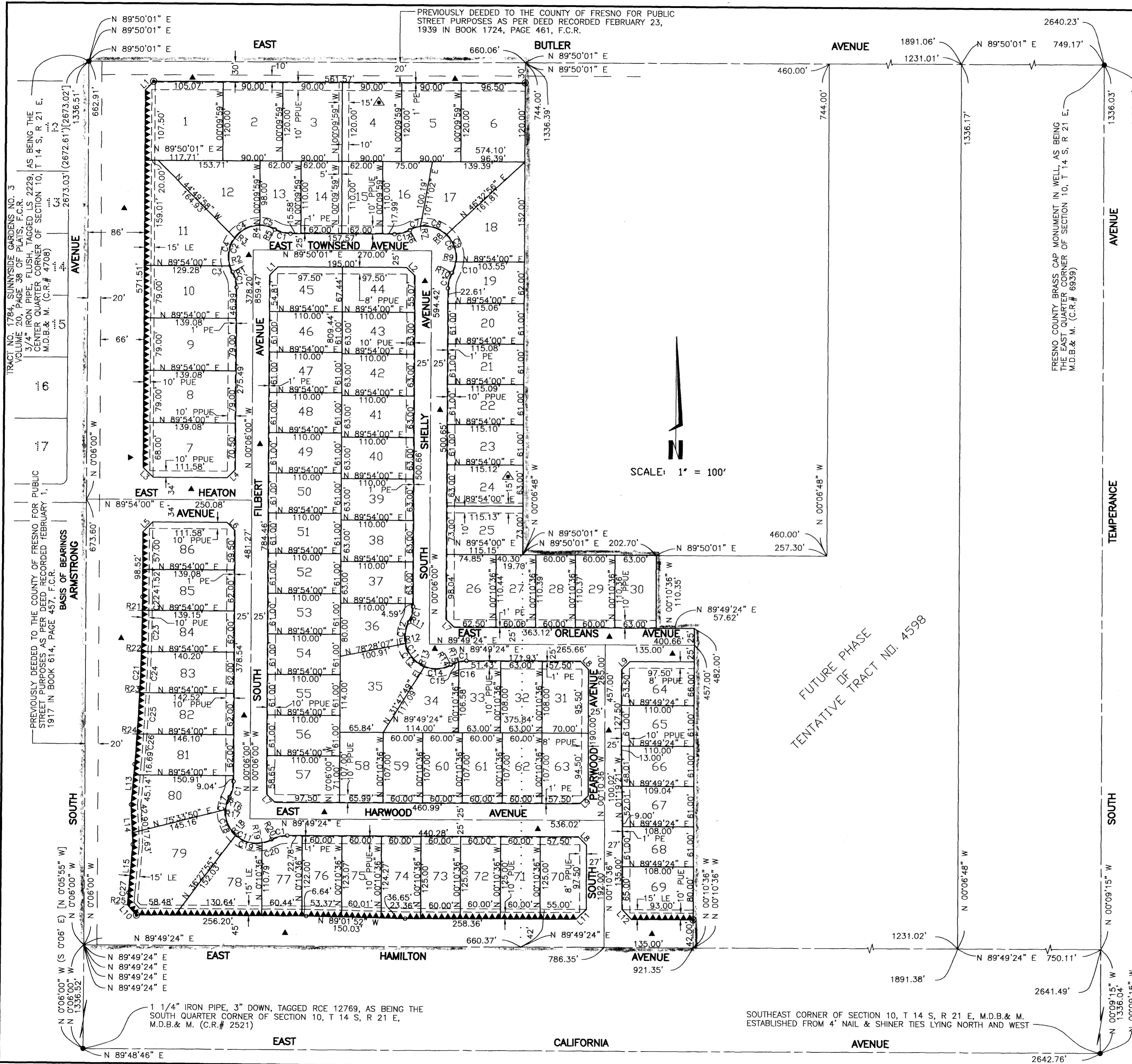
LINE	DIRECTION	DISTANCE
L1	N 44°52'01" E	17.69'
L2	N 45°07'59" W	17.67'
L3	N 45°06'00" W	21.21'
L4	N 44°54'00" E	17.68'
L5	N 44°54'00" E	21.21'
L6	N 45°06'00" W	17.68'
L7	N 45°08'18" W	17.67'
L8	N 45°10'36" W	17.68'
L9	N 44°49'24" E	17.68'
L10	N 43°01'14" W	20.40'
L11	N 44°49'24" E	21.21'
L12	N 45°10'36" W	21.21'
L13	N 4°39'02" E	61.83'
L14	N 2°56'40" W	60.53'
L15	N 4°39'02" E	73.52'

BASIS OF BEARINGS

THE WEST LINE OF THE SOUTHEAST QUARTER OF SECTION 10, TOWNSHIP 14 SOUTH, RANGE 21 EAST, MOUNT DIABLO BASE AND MERIDIAN, TAKEN AS BEARING SOUTH 0°06'00" EAST, AS PER MAP OF SUNNYSIDE GARDENS NO. 3, TRACT NO. 1784, RECORDED IN VOLUME 20, PAGE 38 OF PLATS, FRESNO COUNTY RECORDS.

RADIAL	DIRECTION
R1	S 60°47'23" W
R2	S 72°18'11" W
R3	S 54°03'29" W
R4	N 00°25'10" W
R5	N 28°56'38" E
R6	N 29°16'36" W
R7	N 08°59'17" W
R8	N 43°23'36" E
R9	S 81°44'56" E
R10	S 60°59'22" E
R11	N 60°59'22" W
R12	S 78°37'06" W
R13	S 21°29'44" W
R14	S 29°17'14" E
R15	N 14°07'46" W
R16	N 60°59'22" W
R17	N 86°00'02" W
R18	S 41°39'33" W
R19	S 10°40'25" E
R20	S 29°17'14" E
R21	S 89°42'51" E
R22	S 88°32'45" E
R23	S 87°22'36" E
R24	S 86°12'24" E
R25	S 85°43'05" E

CURVE	RADIUS	LENGTH	TANGENT	DELTA
C1	48.00'	24.39'	12.46'	29°06'37"
C2	47.00'	121.53'	164.75'	148°09'15"
C3	47.00'	9.44'	4.74'	11°30'49"
C4	47.00'	44.00'	23.76'	53°38'19"
C5	47.00'	24.09'	12.31'	29°21'48"
C6	47.00'	121.64'	165.47'	148°17'14"
C7	47.00'	16.64'	8.41'	20°17'19"
C8	47.00'	42.97'	23.12'	52°22'53"
C9	47.00'	45.00'	24.39'	54°51'28"
C10	47.00'	17.03'	8.61'	20°45'34"
C11	47.00'	121.65'	165.53'	148°17'52"
C12	47.00'	33.13'	17.29'	40°23'31"
C13	47.00'	46.86'	25.58'	57°07'23"
C14	47.00'	41.66'	22.31'	50°46'58"
C15	48.00'	12.70'	6.39'	15°09'27"
C16	48.00'	11.69'	5.87'	13°57'10"
C17	47.00'	20.52'	10.42'	25°00'40"
C18	47.00'	42.93'	23.10'	52°20'25"
C19	47.00'	42.93'	23.09'	52°19'58"
C20	47.00'	15.27'	7.70'	18°36'49"
C21	3041.00'	252.14'	126.14'	4°45'02"
C22	3041.00'	20.48'	10.24'	0°23'09"
C23	3041.00'	62.01'	31.01'	1°10'06"
C24	3041.00'	62.05'	31.03'	1°10'09"
C25	3041.00'	62.10'	31.05'	1°10'12"
C26	3041.00'	45.50'	22.75'	0°51'26"
C27	2939.00'	18.91'	9.45'	0°22'07"



SCALE: 1" = 100'



SOUTHEAST CORNER OF SECTION 10, T 14 S, R 21 E, M.D.B. & M. ESTABLISHED FROM 4" NAIL & SHINER TIES LYING NORTH AND WEST

FUTURE PHASE
TENTATIVE TRACT NO. 4598