



Prepared on Thu Oct 18 01:22:31 2018

Street Names, Addresses and (Lot Numbers) for T4570



MAP OF TRACT NO. 4570

PHASE I OF TENTATIVE TRACT NO. 4570
 IN THE CITY OF FRESNO
 FRESNO COUNTY, CALIFORNIA
 SURVEYED AND PLATTED IN AUGUST, 1997
 BY EDWARD D. DUNKEL AND ASSOCIATES
 CONSISTING OF TWO SHEETS
 SHEET 2 OF 2 SHEETS

BASIS OF BEARINGS

THE NORTH LINE OF THE SOUTHWEST QUARTER OF SECTION 16, T. 14 S., R. 21 E., M.D.B. & M., TAKEN TO BE S 89°46'10" E AS SHOWN ON TRACT NO. 4377, RECORDED IN VOLUME 57 OF PLATS, AT PAGES 33, 34 & 35, FRESNO COUNTY RECORDS.

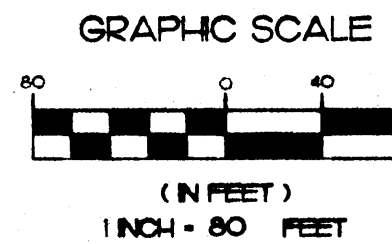
NOTE:
 1" O.D. x 30" LONG IRON PIPE TO BE SET 6" DOWN AND TAGGED RCE-1978B, AT ALL LOT CORNERS, ANGLE POINTS, BEGINNING OF CURVES AND END OF CURVES, OR AS NOTED WITHIN THE TIME SPECIFIED IN THE SUBDIVISION AGREEMENT FOR THIS TRACT.

LEGEND

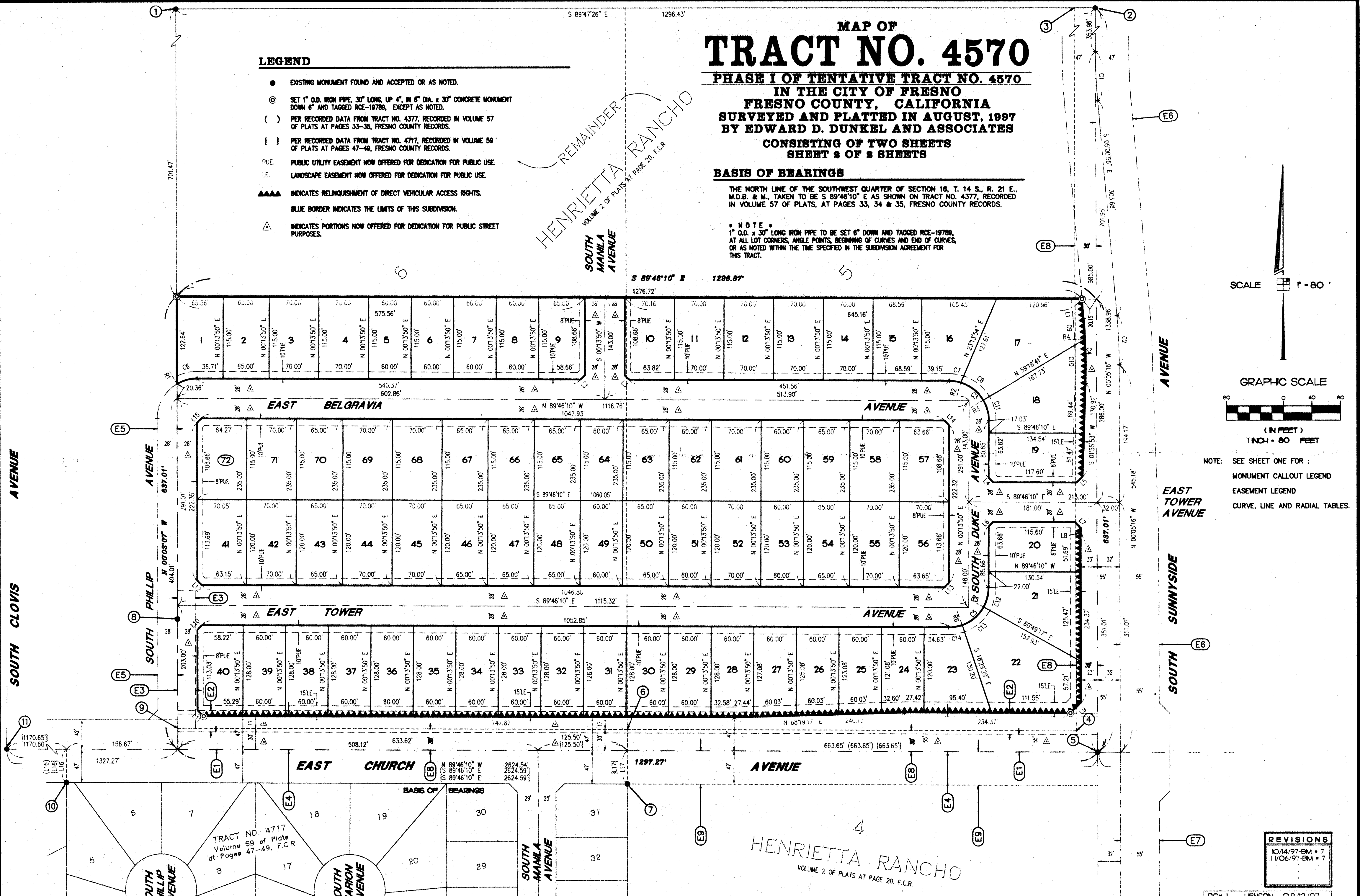
- EXISTING MONUMENT FOUND AND ACCEPTED OR AS NOTED.
- ⊙ SET 1" O.D. IRON PIPE, 30" LONG, UP 4", IN 6" DIA. x 30" CONCRETE MONUMENT DOWN 6" AND TAGGED RCE-1978B, EXCEPT AS NOTED.
- () PER RECORDED DATA FROM TRACT NO. 4377, RECORDED IN VOLUME 57 OF PLATS AT PAGES 33-35, FRESNO COUNTY RECORDS.
- { } PER RECORDED DATA FROM TRACT NO. 4717, RECORDED IN VOLUME 59 OF PLATS AT PAGES 47-49, FRESNO COUNTY RECORDS.
- PUE. PUBLIC UTILITY EASEMENT NOW OFFERED FOR DEDICATION FOR PUBLIC USE.
- LE. LANDSCAPE EASEMENT NOW OFFERED FOR DEDICATION FOR PUBLIC USE.
- ▲▲▲▲ INDICATES RELINQUISHMENT OF DIRECT VEHICULAR ACCESS RIGHTS.
- BLUE BORDER INDICATES THE LIMITS OF THIS SUBDIVISION.
- △ INDICATES PORTIONS NOW OFFERED FOR DEDICATION FOR PUBLIC STREET PURPOSES.

REMAINDER
 HENRIETTA RANCHO
 VOLUME 2 OF PLATS AT PAGE 20, F.C.R.

SCALE 1" = 80'



NOTE: SEE SHEET ONE FOR:
 MONUMENT CALLOUT LEGEND
 EASEMENT LEGEND
 CURVE, LINE AND RADIAL TABLES.



TRACT NO. 4717
 Volume 59 of Plats
 at Pages 47-49, F.C.R.

4
 HENRIETTA RANCHO
 VOLUME 2 OF PLATS AT PAGE 20, F.C.R.

| REVISIONS |
|-----------------|
| 10/14/97-BM # 7 |
| 11/06/97-BM # 7 |