



Street Names, Addresses and (Lot Numbers) for T4567

Prepared on Sat Feb 09 22:36:50 2019



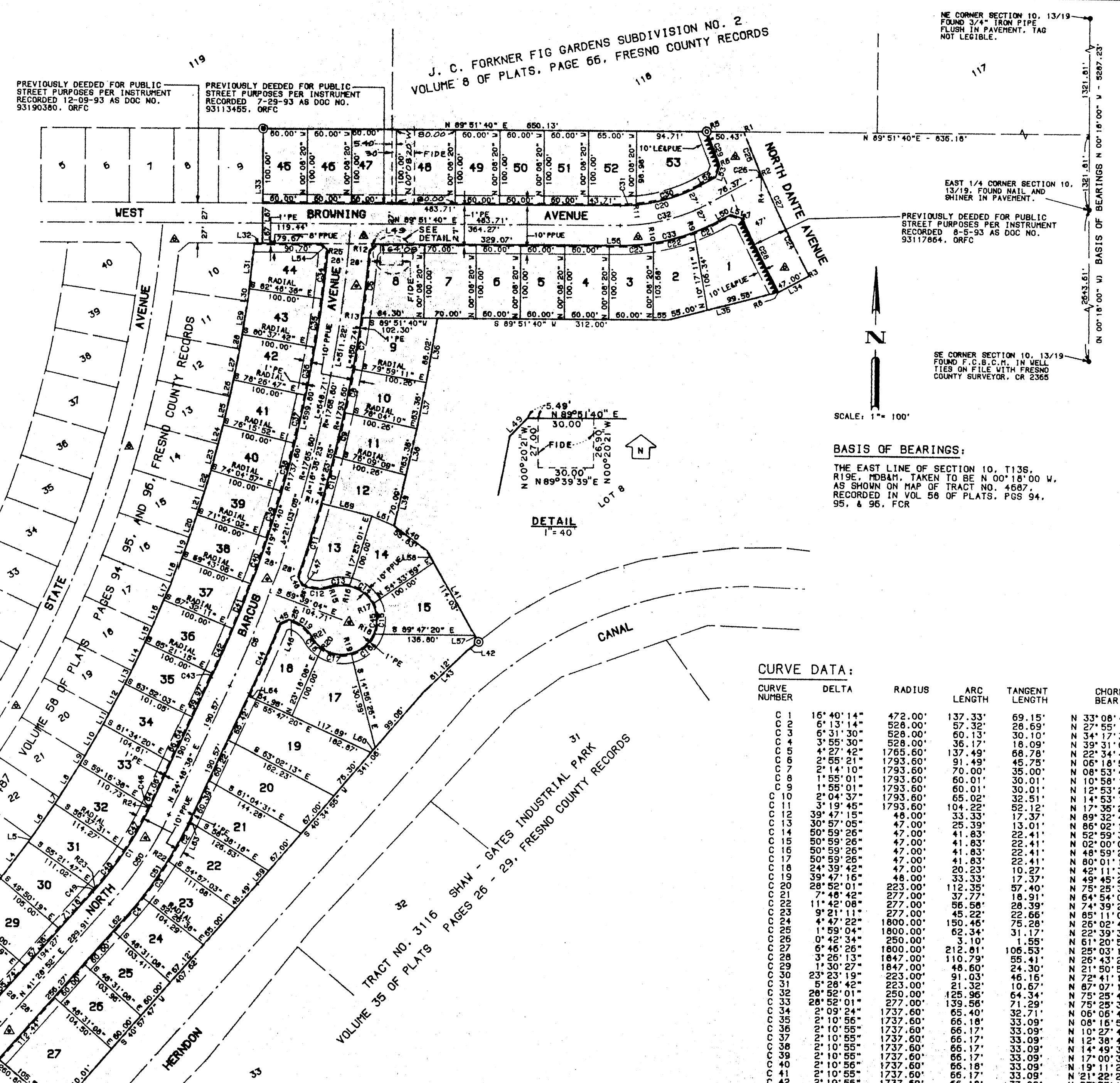
TRACT NO. 4567

PHASE I OF TENTATIVE TRACT NO. 4567
 IN THE CITY OF FRESNO
 FRESNO COUNTY, CALIFORNIA
 SURVEYED AND PLATTED IN JULY, 1997
 BY HANNA & HANNA, INC.
 CONSISTING OF 2 SHEETS
 SHEET 2 OF 2

- LEGEND**
- MONUMENT FOUND AND ACCEPTED AS NOTED FOUND AND ACCEPTED 3/4" IRON PIPE UP 4" IN 6" DIA PCC MONUMENT, 6" BELOW GROUND, TAGGED LS 5277, UNLESS OTHERWISE NOTED
 - ⊙ SET 3/4"x30" IRON PIPE UP 4" IN 6" DIA PCC MONUMENT, 6" BELOW GROUND, TAGGED LS 5277
 - INDICATES RELINQUISHMENT OF DIRECT ACCESS RIGHTS
 - ▲ INDICATES PREVIOUSLY DEEDED FOR PUBLIC STREET PURPOSES AS INDICATED
 - ▲ INDICATES NOW OFFERED FOR DEDICATION FOR PUBLIC STREET PURPOSES
 - FIDE EASEMENT AND AGREEMENT IN FAVOR OF FRESNO IRRIGATION DISTRICT FOR PIPELINE BY INSTRUMENT RECORDED 6-9-95 AS DOC NO. 95069383, ORFC
 - PE INDICATES PEDESTRIAN EASEMENT NOW OFFERED FOR DEDICATION FOR PUBLIC STREET PURPOSES
 - PUE INDICATES PUBLIC UTILITY EASEMENT NOW OFFERED FOR DEDICATION FOR PUBLIC STREET PURPOSES
 - PPUE INDICATES PLANTING AND PUBLIC UTILITY EASEMENT NOW OFFERED FOR DEDICATION FOR PUBLIC USE
 - INDICATES RECORD DATA PER MAP OF TRACT NO. 4687 RECORDED IN VOL 58 OF PLATS, PGS 94, 95 & 96, FCR BLUE BORDER INDICATES THE LIMITS OF THIS SUBDIVISION

LINE DATA:

| LINE NUMBER | BEARING | DISTANCE |
|-------------|------------------|-----------|
| L 1 | ON 40° 09' 41" E | (123.99') |
| L 2 | ON 38° 49' 48" E | (62.36') |
| L 3 | ON 37° 40' 12" E | (3.72') |
| L 4 | ON 36° 34' 56" E | (58.65') |
| L 5 | ON 35° 25' 57" E | (16.94') |
| L 6 | ON 34° 20' 34" E | (55.42') |
| L 7 | ON 33° 11' 43" E | (10.17') |
| L 8 | ON 32° 06' 19" E | (52.19') |
| L 9 | ON 30° 57' 23" E | (13.41') |
| L 10 | ON 29° 52' 00" E | (48.96') |
| L 11 | ON 28° 43' 04" E | (16.64') |
| L 12 | ON 27° 37' 41" E | (45.73') |
| L 13 | ON 26° 28' 46" E | (19.87') |
| L 14 | ON 25° 23' 21" E | (42.49') |
| L 15 | ON 24° 14' 29" E | (23.10') |
| L 16 | ON 23° 09' 03" E | (39.26') |
| L 17 | ON 22° 00' 10" E | (36.33') |
| L 18 | ON 20° 54' 44" E | (36.04') |
| L 19 | ON 19° 45' 52" E | (29.57') |
| L 20 | ON 18° 40' 25" E | (32.80') |
| L 21 | ON 17° 31' 33" E | (32.79') |
| L 22 | ON 16° 26' 07" E | (29.57') |
| L 23 | ON 15° 17' 13" E | (36.03') |
| L 24 | ON 14° 11' 47" E | (26.33') |
| L 25 | ON 13° 02' 55" E | (39.26') |
| L 26 | ON 11° 57' 30" E | (23.10') |
| L 27 | ON 10° 48' 36" E | (42.49') |
| L 28 | ON 09° 43' 08" E | (19.87') |
| L 29 | ON 08° 34' 19" E | (45.72') |
| L 30 | ON 07° 28' 51" E | (16.65') |
| L 31 | ON 06° 09' 43" E | (62.23') |
| L 32 | ON 05° 01' 40" E | (11.03') |
| L 33 | ON 04° 08' 20" E | (154.00') |
| L 34 | ON 03° 33' 30" E | 47.00' |
| L 35 | ON 02° 18' 49" E | 154.58' |
| L 36 | ON 01° 24' 56" E | 88.02' |
| L 37 | ON 00° 58' 19" E | 63.36' |
| L 38 | ON 00° 17' 13" E | 63.36' |
| L 39 | ON 00° 12' 53" E | 70.00' |
| L 40 | ON 00° 05' 01" E | 55.83' |
| L 41 | ON 00° 00' 03" E | 142.03' |
| L 42 | ON 00° 00' 00" E | 20.00' |
| L 43 | ON 00° 01' 59" E | 81.12' |
| L 44 | ON 00° 04' 50" E | 127.89' |
| L 45 | ON 00° 08' 53" E | 13.26' |
| L 46 | ON 00° 12' 59" E | 6.78' |
| L 47 | ON 00° 17' 39" E | 6.78' |
| L 48 | ON 00° 22' 11" E | 13.26' |
| L 49 | ON 00° 26' 53" E | 13.47' |
| L 50 | ON 00° 31' 59" E | 17.84' |
| L 51 | ON 00° 37' 01" E | 15.53' |
| L 52 | ON 00° 42' 09" E | 23.76' |
| L 53 | ON 00° 47' 15" E | 16.61' |
| L 54 | ON 00° 52' 18" E | 13.01' |
| L 55 | ON 00° 57' 15" E | 20.00' |
| L 56 | ON 01° 02' 08" E | 14.98' |
| L 57 | ON 01° 06' 50" E | 10.00' |
| L 58 | ON 01° 11' 29" E | 18.00' |
| L 59 | ON 01° 16' 03" E | 23.00' |
| L 60 | ON 01° 20' 34" E | 8.70' |
| L 61 | ON 01° 25' 16" E | 32.88' |
| L 62 | ON 01° 29' 52" E | 23.83' |
| L 63 | ON 01° 34' 23" E | 3.20' |
| L 64 | ON 01° 38' 58" E | 1.34' |
| L 65 | ON 01° 43' 27" E | 27.00' |
| L 66 | ON 01° 48' 01" E | 4.99' |
| L 67 | ON 01° 52' 41" E | 17.00' |
| L 68 | ON 01° 57' 16" E | 2.20' |
| L 69 | ON 02° 01' 59" E | 70.11' |



NOTE:
 SET 3/4"x30" IRON PIPE DOWN 0.5' TAGGED LS 5277, OR WILL BE SET WITHIN ONE YEAR OR ANY APPROVED EXTENSION THEREOF, FOR ALL LOT CORNERS, BLOCK CORNERS, AND BEGINNING AND END OF ALL CURVES.

HANNA & HANNA, INC.
 ENGINEERS, SURVEYORS & PLANNERS
 1707 N. FRESNO STREET
 FRESNO, CA. 93703
 PH. (209) 445-1061