



# Street Names, Addresses and (Lot Numbers) for T4565

Prepared on Mon Oct 22 16:41:24 2018



# TRACT NO. 4565

PHASE 1 OF TENTATIVE TRACT NO. 4565  
 IN THE CITY OF FRESNO  
 FRESNO COUNTY, CALIFORNIA  
 SURVEYED AND PLATTED  
 IN JULY, 1996  
 BY HANNA & HANNA, INC.  
 CONSISTING OF 3 SHEETS  
 SHEET 3 OF 3

### LINE DATA:

Line Number	Bearing	Distance
L 1	N 89° 10' 20" W	55.00'
L 2	N 00° 49' 40" W	5.85'
L 3	N 45° 04' 44" W	20.50'
L 4	N 88° 25' 33" W	139.68'
L 5	N 02° 44' 13" W	104.31'
L 6	S 89° 12' 55" E	58.38'
L 7	N 00° 48' 00" W	73.44'
L 8	N 06° 49' 33" W	85.68'
L 9	N 00° 50' 03" W	138.30'
L 10	N 87° 46' 21" E	60.67'
L 11	N 00° 49' 40" W	70.03'
L 12	N 00° 49' 40" W	98.39'
L 13	S 89° 10' 20" W	22.00'
L 14	N 43° 15' 01" W	17.30'
L 15	S 89° 12' 55" E	25.01'
L 16	S 89° 12' 55" E	33.37'
L 17	N 45° 22' 01" W	20.85'
L 18	N 00° 49' 40" W	13.83'
L 19	N 00° 49' 40" W	19.14'
L 20	N 00° 49' 40" W	18.65'
L 21	N 37° 03' 36" W	38.33'
L 22	N 25° 57' 02" W	38.86'
L 23	N 09° 57' 16" W	37.44'
L 24	N 56° 19' 30" W	15.56'
L 25	N 13° 27' 04" W	94.60'
L 26	N 46° 09' 34" W	15.44'
L 27	N 89° 45' 18" W	104.86'
L 28	N 00° 10' 39" W	47.41'
L 29	N 50° 37' 11" W	108.68'
L 30	N 00° 51' 04" W	128.24'
L 31	N 29° 23' 00" W	15.21'
L 32	N 01° 01' 23" W	35.00'
L 33	S 11° 25' 47" W	16.21'
L 34	N 00° 49' 53" W	106.00'
L 35	N 00° 49' 53" W	29.00'
L 36	N 05° 39' 55" W	67.00'
L 37	N 08° 54' 30" W	74.10'

### CURVE DATA:

Curve Number	Delta	Radius	Arc Length	Tangent Length	Chord Bearing	Chord Length
C 1	2° 37' 01"	2475.00'	113.04'	56.53'	N 89° 28' 34" E	113.03'
C 2	57° 31' 52"	48.00'	48.20'	26.35'	N 29° 35' 36" E	46.20'
C 3	26° 48' 16"	47.00'	21.39'	11.20'	N 44° 37' 24" E	21.39'
C 4	60° 57' 11"	47.00'	50.00'	27.66'	N 01° 04' 40" E	47.68'
C 5	60° 57' 11"	47.00'	50.00'	27.66'	N 59° 52' 30" W	47.68'
C 6	51° 12' 01"	47.00'	42.00'	22.52'	N 64° 02' 53" E	40.62'
C 7	37° 37' 13"	47.00'	36.86'	16.01'	N 19° 38' 16" E	30.31'
C 8	9° 07' 23"	470.00'	74.84'	37.50'	N 05° 23' 35" E	74.76'
C 9	0° 17' 58"	753.00'	3.94'	1.97'	N 76° 41' 55" W	3.94'
C 10	14° 49' 33"	753.00'	194.85'	97.97'	N 69° 08' 09" W	194.30'
C 11	14° 49' 33"	800.00'	207.01'	104.03'	N 69° 08' 09" W	206.43'
C 12	14° 49' 33"	847.00'	219.17'	110.20'	N 69° 08' 09" W	216.56'
C 13	0° 35' 21"	747.00'	7.68'	3.84'	N 62° 01' 03" W	7.68'
C 14	15° 10' 03"	747.00'	197.75'	99.46'	N 69° 53' 45" W	197.17'
C 15	3° 55' 30"	747.00'	51.17'	25.60'	N 79° 26' 32" W	51.16'
C 16	1° 22' 06"	2475.00'	59.11'	29.56'	N 85° 59' 50" E	59.11'
C 17	0° 36' 11"	2775.00'	69.21'	14.60'	N 85° 36' 52" E	29.21'
C 18	2° 01' 41"	2775.00'	98.22'	49.12'	N 86° 55' 48" E	98.22'
C 19	1° 01' 58"	2775.00'	50.02'	25.01'	N 88° 27' 32" E	50.02'
C 20	2° 01' 41"	2775.00'	98.22'	49.12'	N 88° 29' 36" E	98.22'
C 21	2° 01' 41"	2775.00'	98.22'	49.12'	N 88° 58' 35" W	34.31'
C 22	42° 48' 51"	47.00'	35.12'	18.43'	N 06° 47' 34" W	32.44'
C 23	48° 45' 45"	47.00'	40.00'	21.30'	N 38° 59' 43" E	38.80'
C 24	51° 12' 01"	47.00'	42.00'	22.52'	N 88° 58' 32" E	40.62'
C 25	51° 12' 01"	47.00'	42.00'	22.52'	N 39° 49' 22" W	40.62'
C 26	40° 22' 34"	47.00'	33.12'	17.28'	N 05° 57' 56" E	32.44'
C 27	57° 17' 45"	50.00'	50.00'	27.32'	N 37° 43' 04" W	47.94'
C 28	5° 53' 33"	50.00'	7.76'	3.89'	N 04° 37' 25" W	7.75'
C 29	1° 47' 06"	2775.00'	86.45'	43.23'	N 87° 04' 11" W	86.45'
C 30	19° 48' 41"	50.00'	17.29'	8.73'	N 76° 16' 17" W	17.20'
C 31	85° 59' 59"	50.00'	75.05'	46.63'	N 43° 10' 38" W	68.20'
C 32	3° 24' 32"	470.00'	27.96'	13.99'	N 82° 32' 09" E	27.96'
C 33	5° 42' 51"	470.00'	46.87'	23.46'	N 07° 05' 51" E	46.85'
C 34	7° 10' 02"	753.00'	94.19'	47.16'	N 73° 15' 53" W	94.13'
C 35	7° 57' 29"	753.00'	104.59'	52.38'	N 65° 42' 07" W	104.50'
C 36	19° 23' 45"	653.00'	132.24'	105.74'	N 70° 55' 15" W	208.76'
C 37	23° 21' 13"	47.00'	19.24'	9.62'	N 89° 28' 34" E	18.94'
C 38	2° 31' 20"	2475.00'	108.95'	54.48'	N 89° 28' 34" E	108.94'
C 39	0° 05' 41"	2475.00'	4.09'	2.05'	N 89° 15' 44" W	4.09'
C 40	237° 31' 52"	47.00'	194.85'	97.97'	N 60° 24' 24" W	82.40'

### RADIAL DATA:

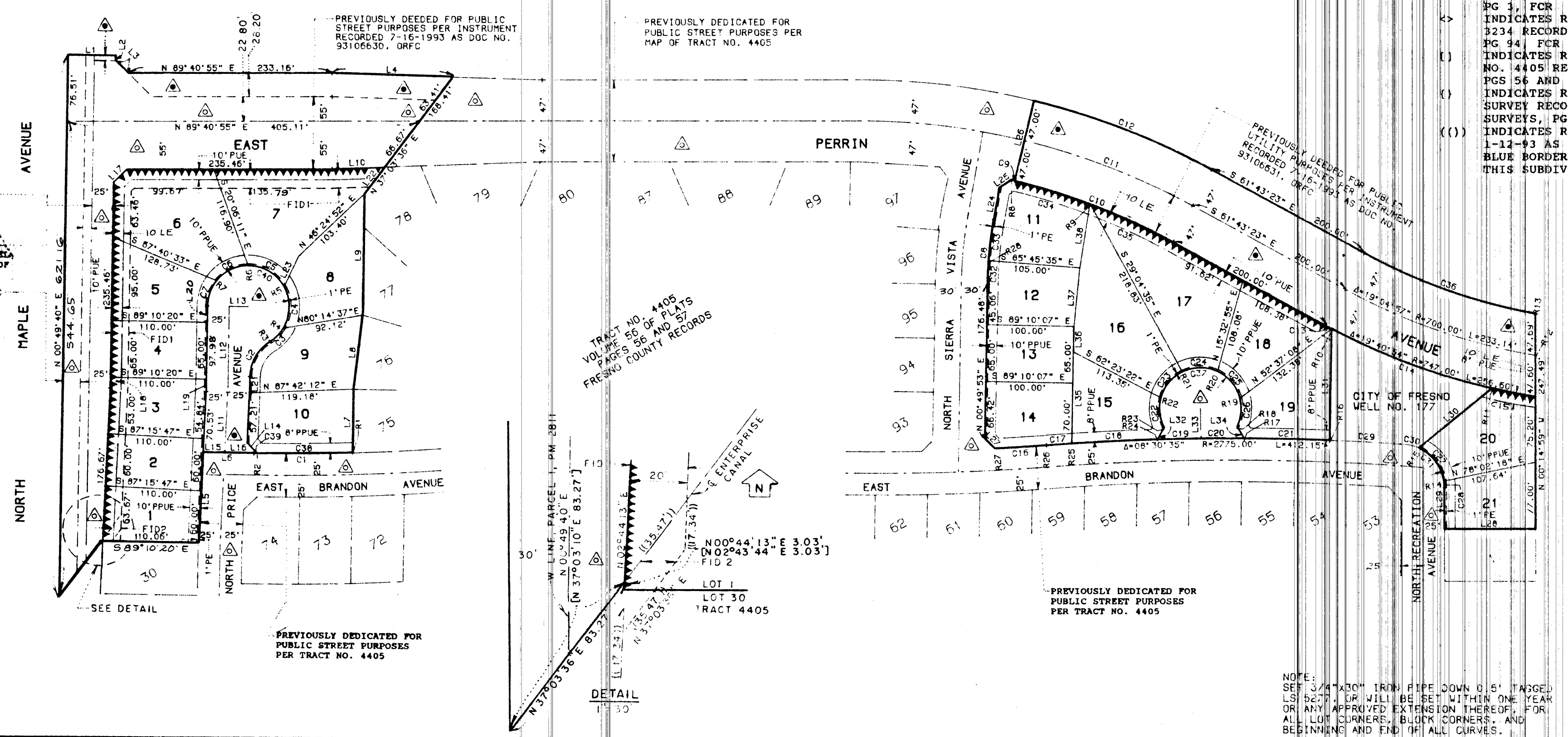
Radial Number	Radial Bearing	Radius
R 1	S 01° 49' 56" E	2475.00'
R 2	S 00° 41' 24" E	2475.00'
R 3	S 3° 38' 28" E	47.00'
R 4	S 54° 26' 44" E	47.00'
R 5	N 60° 36' 05" E	47.00'
R 6	N 00° 21' 06" E	47.00'
R 7	N 51° 33' 07" E	47.00'
R 8	N 13° 09' 06" E	753.00'
R 9	N 20° 19' 08" E	753.00'
R 10	S 27° 41' 16" E	747.00'
R 11	S 12° 31' 14" E	747.00'
R 12	S 09° 11' 40" E	700.00'
R 13	S 09° 52' 52" E	653.00'
R 14	N 80° 55' 48" E	50.00'
R 15	N 23° 38' 03" E	50.00'
R 16	N 02° 02' 16" E	2775.00'
R 17	N 00° 00' 36" E	2775.00'
R 18	S 53° 50' 47" E	47.00'
R 19	N 75° 45' 37" E	47.00'
R 20	N 24° 34' 37" E	47.00'
R 21	N 26° 37' 24" E	47.00'
R 22	N 75° 23' 09" E	47.00'
R 23	S 61° 48' 00" E	47.00'
R 24	N 02° 03' 21" E	2775.00'
R 25	N 04° 05' 02" E	2775.00'
R 26	N 04° 41' 13" E	2775.00'
R 27	S 03° 19' 07" E	2475.00'
R 28	N 85° 45' 35" E	470.00'

### LEGEND:

- FOUND MONUMENT AS NOTED ON SHEET 2
- FOUND FID MONUMENT AS NOTED ON SHEET 2
- CALCULATED POSITION FOR FID RIGHT-OF-WAY
- INDICATES RELINQUISHMENT OF DIRECT ACCESS RIGHTS
- △ INDICATES PREVIOUSLY DEEDED OR DEDICATED FOR PUBLIC STREET PURPOSES, AS NOTED
- △ INDICATES NOW OFFERED FOR DEDICATION FOR PUBLIC STREET PURPOSES
- PE INDICATES PEDESTRIAN EASEMENT NOW OFFERED FOR DEDICATION FOR PUBLIC USE
- PUE INDICATES PUBLIC UTILITY EASEMENT NOW OFFERED FOR DEDICATION FOR PUBLIC USE
- PPUE INDICATES PLANTING AND PUBLIC UTILITY EASEMENT NOW OFFERED FOR DEDICATION FOR PUBLIC USE
- FID1 INDICATES 20' PIPELINE EASEMENT GRANTED TO FRESNO IRRIGATION DISTRICT PER INSTRUMENT RECORDED 12-21-92 AS DOC NO. 92190653, ORFC
- FID2 INDICATES PIPELINE EASEMENT GRANTED TO FRESNO IRRIGATION DISTRICT PER INSTRUMENT RECORDED 1-12-93 AS DOC NO. 93004649, ORFC
- ( ) INDICATES RECORD DATA PER PARCEL MAP NO. 2811 RECORDED IN BK 19 OF PARCEL MAPS, PG 3, FCR
- <> INDICATES RECORD DATA PER PARCEL MAP NO. 3234 RECORDED IN BK 21 OF PARCEL MAPS, PG 94, FCR
- [ ] INDICATES RECORD DATA PER MAP OF TRACT NO. 4405 RECORDED IN VOL 56 OF PLATS, PGS 56 AND 57, FCR
- ( ) INDICATES RECORD DATA PER RECORD OF SURVEYS RECORDED IN BK 21 OF RECORD OF SURVEYS, PG 27, FCR
- ( ) INDICATES RECORD DATA PER DEED RECORDED 1-12-93 AS DOC NO. 93004649, ORFC
- BLUE BORDER INDICATES THE LIMITS OF THIS SUBDIVISION



SCALE: 1" = 100'



NOTE:  
 SET 3/4" X 30" IRON PIPE DOWN 0.5" TAPPED  
 LSI 5277, OR WILL BE SET WITHIN ONE YEAR  
 OR ANY APPROVED EXTENSION THEREOF, FOR  
 ALL LOT CORNERS, BLOCK CORNERS, AND  
 BEGINNING AND END OF ALL CURVES.

HANNA & HANNA, INC.  
 ENGINEERS, SURVEYORS AND PLANNERS  
 1707 N. FRESNO STREET  
 FRESNO, CA. 93703  
 PH. (209) 445-1061  
 W.O. 95-125 DR. NO. F-1253