



Prepared on Thu Feb 14 22:53:53 2019

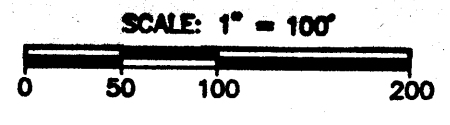
Street Names, Addresses and (Lot Numbers) for T4544



FINAL MAP OF TRACT NO. 4544

IN THE CITY OF FRESNO, FRESNO COUNTY, CALIFORNIA
 SURVEYED AND PLATTED IN JANUARY 2004
 BY YAMABE & HORN ENGINEERING, INC.

CONSISTING OF TWO SHEETS
 SHEET 2 OF 2

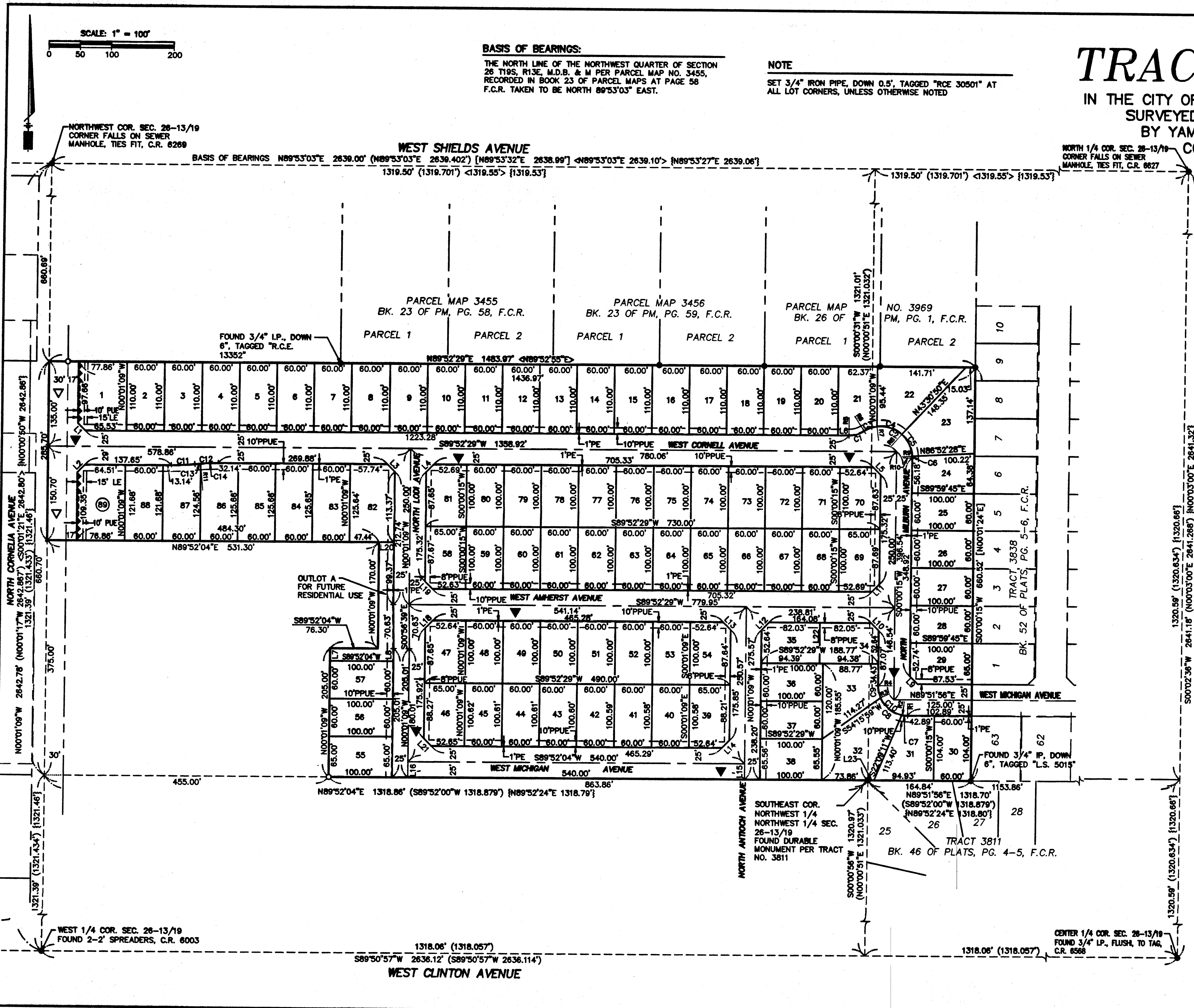


BASIS OF BEARINGS:

THE NORTH LINE OF THE NORTHWEST QUARTER OF SECTION 26 T19S, R13E, M.D.B. & M PER PARCEL MAP NO. 3455, RECORDED IN BOOK 23 OF PARCEL MAPS AT PAGE 58 F.C.R. TAKEN TO BE NORTH 89°53'03\"/>

NOTE

SET 3/4\"/>



LEGEND

- FOUND 3/4\"/>
- SET 3/4\"/>
- ▽ 30' WIDE PRESCRIPTIVE RIGHT OF WAY, NOW OFFERED FOR DEDICATION FOR PUBLIC STREET PURPOSES.
- ▼ NOW OFFERED FOR DEDICATION FOR PUBLIC STREET PURPOSES
- C.R. DENOTES CORNER RECORDS ON FILE WITH FRESNO COUNTY SURVEYOR
- I.P. IRON PIPE
- ORFC OFFICIAL RECORDS FRESNO COUNTY
- F.C.R. FRESNO COUNTY RECORDS
- PPUE PLANTING AND PUBLIC UTILITY EASEMENT NOW OFFERED FOR DEDICATION FOR PUBLIC USE
- PUE PUBLIC UTILITY EASEMENT NOW OFFERED FOR DEDICATION FOR PUBLIC USE
- PE PEDESTRIAN EASEMENT NOW OFFERED FOR DEDICATION FOR PUBLIC USE
- LE LANDSCAPE EASEMENT NOW OFFERED FOR DEDICATION FOR PUBLIC USE
- BCM BRASS CAP MONUMENT
- () RECORD DATA PER PARCEL MAP NO. 1815, RECORDED IN BOOK 11 OF PARCEL MAPS AT PAGE 71, F.C.R.
- [] RECORD DATA PER TRACT NO. 3838, RECORDED IN VOLUME 52 OF PLATS AT PAGES 5 & 6, F.C.R.
- < > RECORD DATA PER PARCEL MAP NO. 3455, RECORDED IN BOOK 23 OF PARCEL MAPS AT PAGE 58, F.C.R.
- { } RECORD DATA PER TRACT MAP NO. 3811, RECORDED IN VOLUME 46 OF PLATS AT PAGES 4 AND 5, F.C.R.
- ▲▲▲ INDICATES RELINQUISHMENT OF DIRECT VEHICULAR ACCESS RIGHTS
- BLUE BORDER INDICATES LIMITS OF SUBDIVISION

LINE TABLE		
LINE	LENGTH	BEARING
L1	17.43'	N45°03'04\"/>

CURVE TABLE			
CURVE	DELTA	RADIUS	LENGTH
C1	32°38'14\"/>		

RADIAL TABLE	
RADIAL	BEARING
R1	S00°08'04\"/>