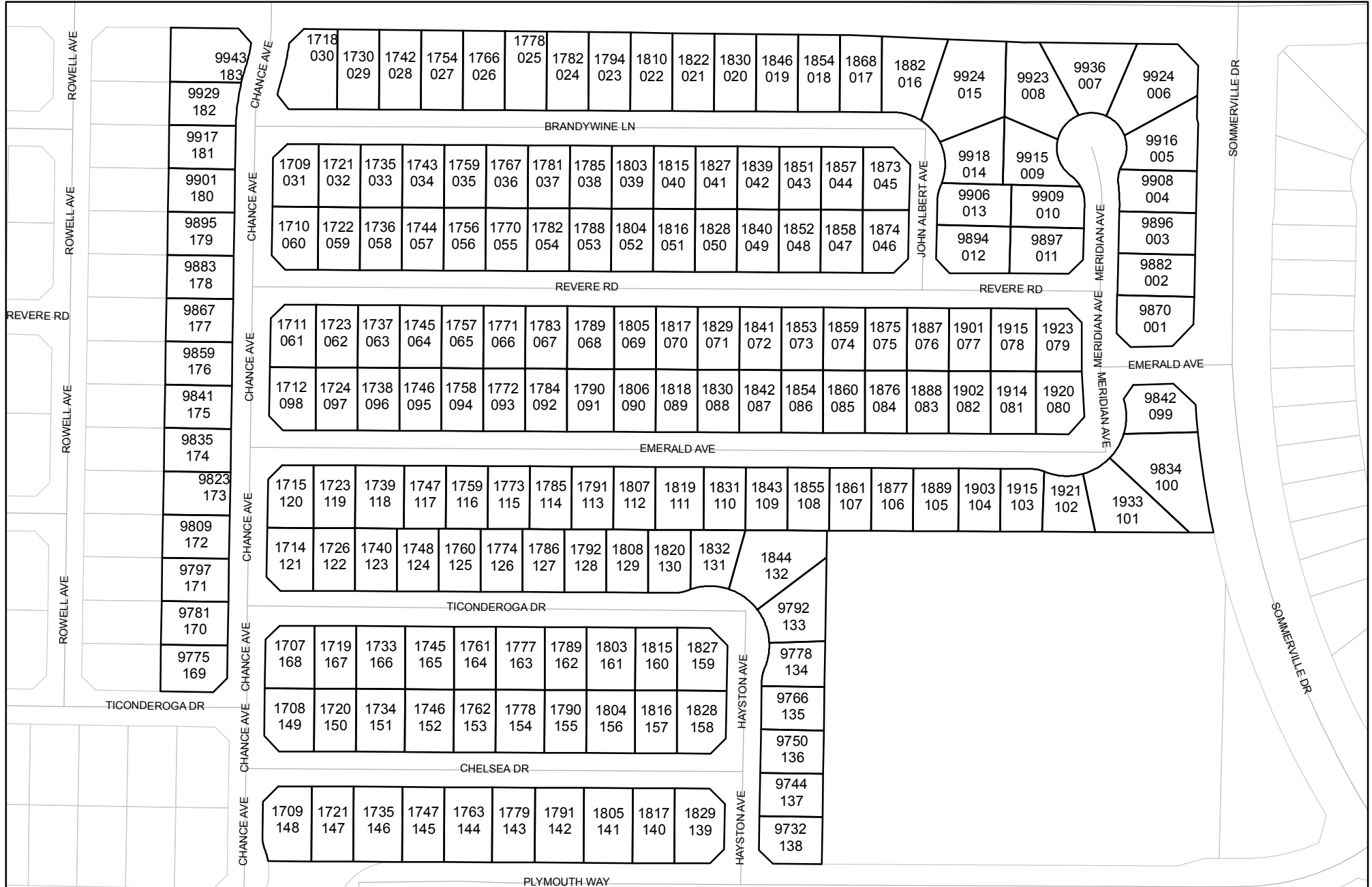




Prepared on Tue Apr 02 14:50:44 2013

# Street Names, Addresses and (Lot Numbers) for T4518



# MAP OF TRACT NO. 4518

FRESNO COUNTY, CALIFORNIA  
SURVEYED AND PLATTED IN FEBRUARY, 1992  
BY EDWARD D. DUNKEL AND ASSOCIATES

CONSISTING OF FOUR SHEETS  
SHEET 3 OF 4 SHEETS

### BASIS OF BEARINGS

THE WEST LINE OF THE NORTHWEST QUARTER OF SECTION 24, T. 12 S., R. 20 E., M.D.B. & M., TAKEN TO BE N 00°49'24" E AS SHOWN ON PLAT MAP NO. 4117, RECORDED IN VOLUME 51, PAGES 1 - 6 OF PLATS, FRESNO COUNTY RECORDS.

### LEGEND

- EXISTING MONUMENT FOUND AND ACCEPTED AS DESCRIBED HEREON.
- ⊙ SET 1" O.D. IRON PIPE, 30" LONG, UP 6" AND TAGGED RCE-19789, EXCEPT AS NOTED.
- ( ) RECORD DATA PER TRACT MAP NO. 4117, RECORDED IN VOLUME 51, PAGES 1 - 6 OF PLATS, FRESNO COUNTY RECORDS.
- (( )) RECORD DATA PER TRACT MAP NO. 4008, RECORDED IN VOLUME 48, PAGES 88 - 93 OF PLATS, FRESNO COUNTY RECORDS.
- [ ] RECORD DATA PER TRACT MAP NO. 1605, RECORDED IN VOLUME 18, PAGES 81 - 82 OF PLATS, FRESNO COUNTY RECORDS.
- { } RECORD DATA PER MAP RECORDED IN BOOK 37 AT PAGE 93 OF RECORD OF SURVEYS, FRESNO COUNTY RECORDS.
- {R1} THE SOUTHERLY 737.00' OF THE EASTERLY 1090.85' OF THE NORTH THREE QUARTERS OF THE NORTHEAST QUARTER OF SECTION 23, TOWNSHIP 12 SOUTH, RANGE 20 EAST, MOUNT DIABLO BASE AND MERIDIAN, PER MAP RECORDED IN BOOK 37 AT PAGE 93 OF RECORD OF SURVEYS, FRESNO COUNTY RECORDS.
- PE PEDESTRIAN EASEMENT NOW OFFERED FOR DEDICATION FOR PUBLIC USE.
- PPUE PLANTING AND PUBLIC UTILITY EASEMENT NOW OFFERED FOR DEDICATION FOR PUBLIC USE.
- LE LANDSCAPE AND WALL EASEMENT NOW OFFERED FOR DEDICATION FOR PUBLIC USE.
- SDE STORM DRAIN EASEMENT NOW OFFERED FOR DEDICATION FOR PUBLIC USE.
- RAS RESTRICTED ACCESS STRIP NOW OFFERED FOR DEDICATION FOR PUBLIC USE.
- (R) DENOTES RADIAL BEARING.
- CR DENOTES CORNER RECORDS, ON FILE WITH FRESNO COUNTY SURVEYOR.
- CALC. INDICATES BEARING OR DISTANCE CALCULATED FROM AVAILABLE DATA.
- ▲▲▲ INDICATES RELINQUISHMENT OF DIRECT ACCESS RIGHTS.
- DISTINCTIVE LINE INDICATES THE LIMITS OF THIS SUBDIVISION.
- △ INDICATES PORTIONS NOW OFFERED FOR DEDICATION FOR PUBLIC STREET PURPOSES.
- DISTANCES NOT MONUMENTED ARE CALCULATED.

### \* NOTE \*

1" O.D. x 30" LONG IRON PIPE TO BE SET 6" DOWN AND TAGGED RCE-19789, AT ALL LOT CORNERS, ANGLE POINTS, BEGINNING OF CURVES AND END OF CURVES WITHIN THE TIME SPECIFIED IN THE SUBDIVISION AGREEMENT FOR THIS TRACT.

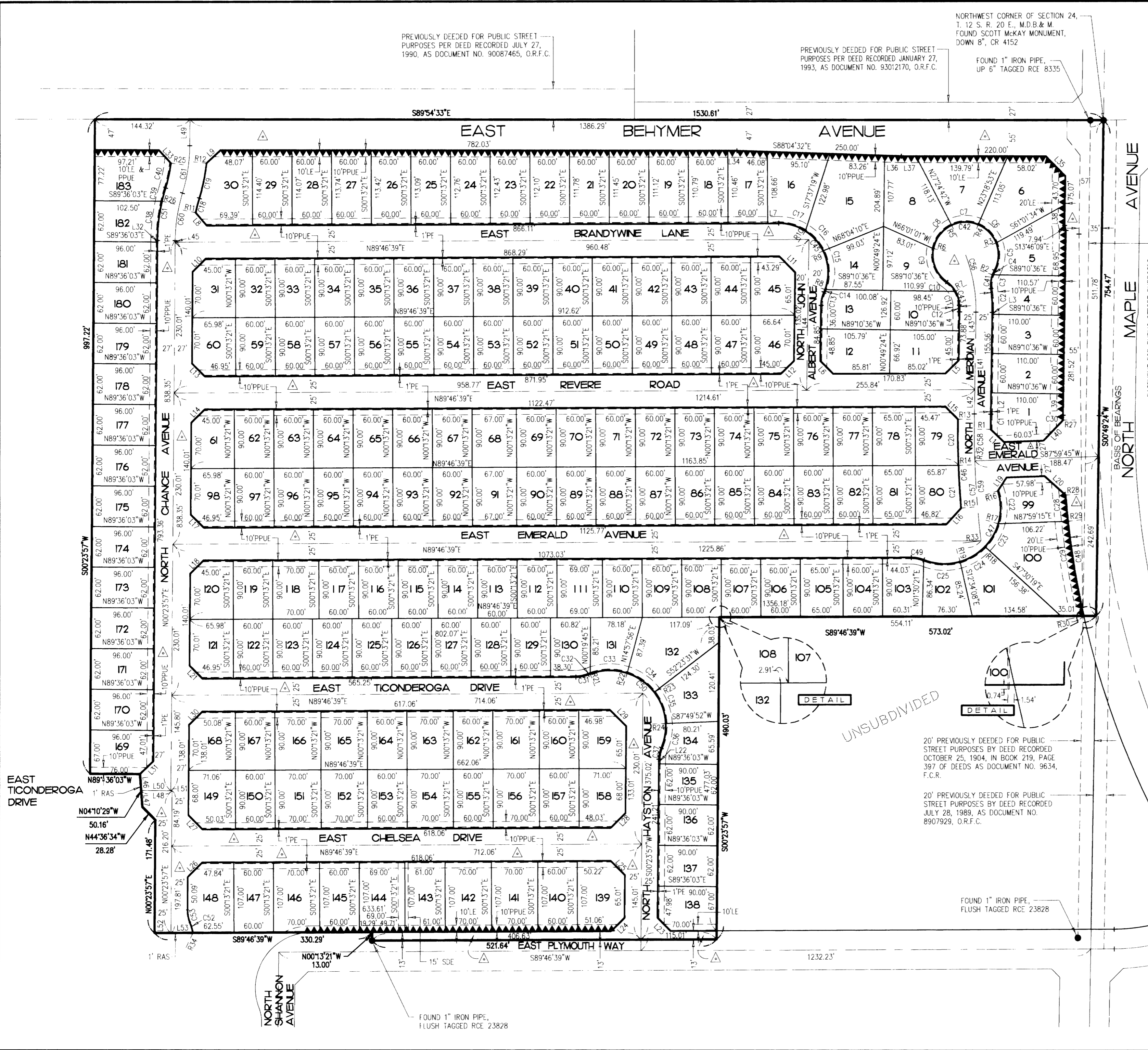
20' PREVIOUSLY DEEDED FOR PUBLIC STREET PURPOSES BY DEED RECORDED OCTOBER 25, 1904, IN BOOK 219, PAGE 397 OF DEEDS AS DOCUMENT NO. 9634, F.C.R.

20' PREVIOUSLY DEEDED FOR PUBLIC STREET PURPOSES BY DEED RECORDED JULY 28, 1989, AS DOCUMENT NO. 8907929, O.R.F.C.

SCALE 1" = 100'

NOTE: SEE SHEET 2 FOR LINE TABLE, CURVE TABLE, AND RADIAL TABLE

REVISIONS	
09/20/93-DH	1
10/25/93-DH	1
11/1/93-RB	4
11/6/93-RB	4



PREVIOUSLY DEEDED FOR PUBLIC STREET PURPOSES PER DEED RECORDED JULY 27, 1990, AS DOCUMENT NO. 90087465, O.R.F.C.

PREVIOUSLY DEEDED FOR PUBLIC STREET PURPOSES PER DEED RECORDED JANUARY 27, 1993, AS DOCUMENT NO. 93012170, O.R.F.C.

NORTHWEST CORNER OF SECTION 24, T. 12 S., R. 20 E., M.D.B. & M. FOUND SCOTT McKAY MONUMENT, DOWN 8", CR 4152

FOUND 1" IRON PIPE, UP 6" TAGGED RCE 8335

FOUND 1" IRON PIPE, FLUSH TAGGED RCE 23828

FOUND 1" IRON PIPE, FLUSH TAGGED RCE 23828