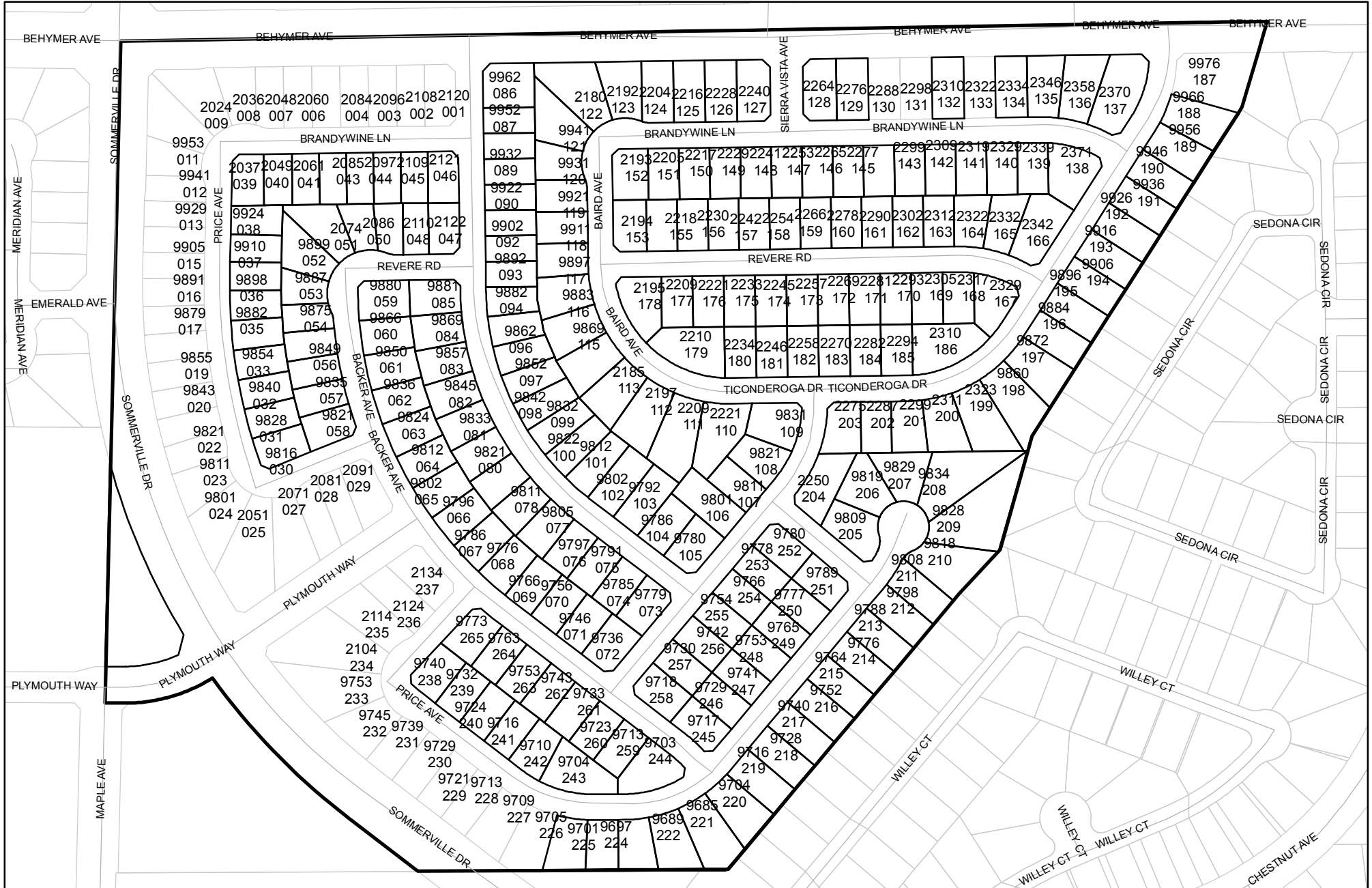
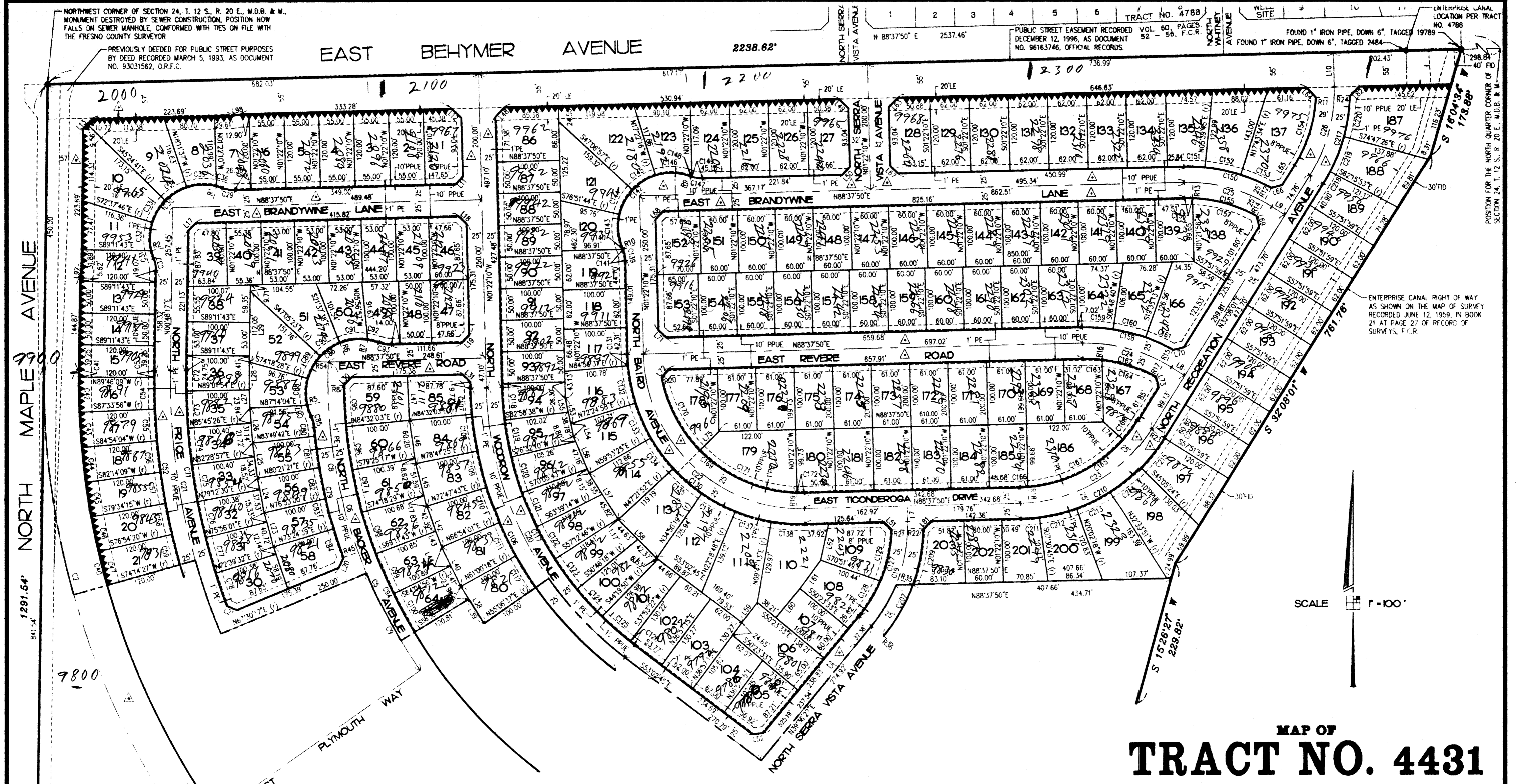




# Street Names, Addresses and (Lot Numbers) for T4431

Prepared on Wed Jun 07 00:09:02 2017





NORTHWEST CORNER OF SECTION 24, T. 12 S., R. 20 E., M.D.B. & M.  
 MONUMENT DESTROYED BY SEWER CONSTRUCTION, POSITION NOW  
 FALLS ON SEWER MANHOLE, CONFORMED WITH TIES ON FILE WITH  
 THE FRESNO COUNTY SURVEYOR

PREVIOUSLY DEEDED FOR PUBLIC STREET PURPOSES  
 BY DEED RECORDED MARCH 5, 1993, AS DOCUMENT  
 NO. 93031562, O.R.F.C.

TRACT NO. 4788  
 PUBLIC STREET EASEMENT RECORDED  
 DECEMBER 12, 1996, AS DOCUMENT  
 NO. 96163746, OFFICIAL RECORDS.

ENTERPRISE CANAL  
 LOCATION PER TRACT  
 NO. 4788

ENTERPRISE CANAL RIGHT OF WAY  
 AS SHOWN ON THE MAP OF SURVEY  
 RECORDED JUNE 12, 1959, IN BOOK  
 21 AT PAGE 27 OF RECORD OF  
 SURVEYS, F.C.R.

POSITION FOR THE NORTH QUARTER CORNER OF  
 SECTION 24, T. 12 S., R. 20 E., M.D.B. & M.

1291.54' NORTH MAPLE AVENUE 9900

9800

20' PREVIOUSLY DEEDED  
 FOR PUBLIC STREET PURPOSES  
 BY DEED RECORDED JULY 28,  
 1989, AS DOCUMENT NO.  
 8907929, O.R.F.C.

SEE SHEET 4

# MAP OF TRACT NO. 4431

INCLUDING 74 PLANNED DEVELOPMENT LOTS  
 IN THE CITY OF FRESNO  
 FRESNO COUNTY, CALIFORNIA  
 SURVEYED AND PLATED IN MARCH, 1998  
 BY EDWARD D. DUNKEL AND ASSOCIATES  
 CONSISTING OF FIVE SHEETS  
 SHEET 3 OF 5 SHEETS

NOTE:  
 SEE SHEET 2 FOR BASIS OF BEARINGS AND LEGEND  
 SEE SHEET 5 FOR LINE TABLE, CURVE TABLE AND RADIAL TABLE

REVISIONS
02/22/99 - B.J.M.

PC# 1 - MERRICK - 6/1/98  
 DUNKEL CADFILE 98023FM

