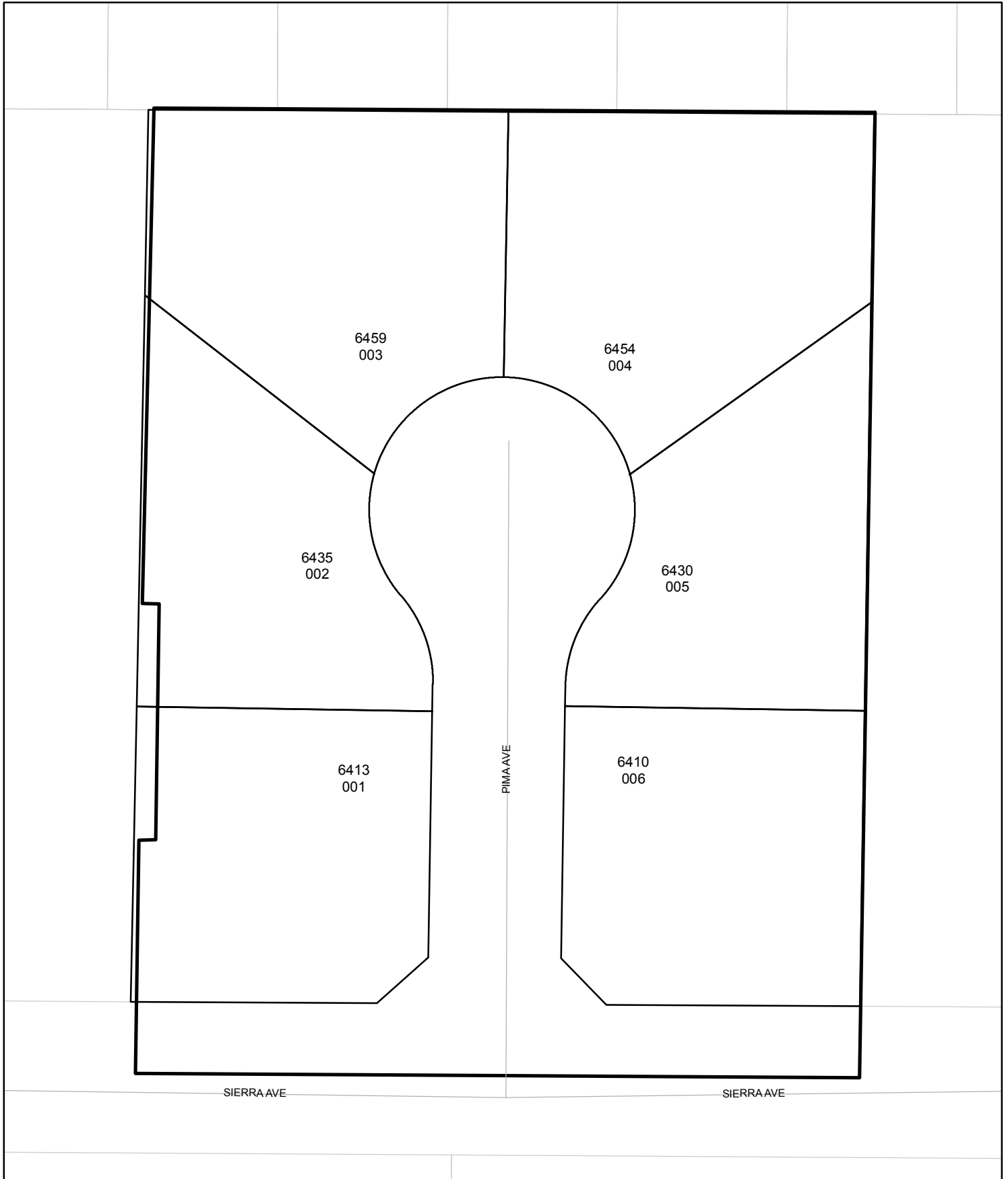




Street Names, Addresses and (Lot Numbers) for T4422

Prepared on Mon Oct 22 16:44:20 2018



MAP OF
TRACT NO. 4422
THE FIG TREE ESTATES

IN THE CITY OF FRESNO, COUNTY OF FRESNO, STATE OF CALIFORNIA
 IN THE NORTHEAST QUARTER SECTION 2, TOWNSHIP 13 SOUTH, RANGE 19 EAST, M.D.B. & M.
 CONSISTING OF TWO SHEETS SHEET 2 OF 2 SHEETS

List of Easements

- E1 An easement for right of way for road purposes dedicated to the County of Fresno by the Map of Bullard Lands Irrigated Subdivision No. 6 recorded in Volume 8 of Plats at Page 25, Fresno County Records.
- E2 An easement for public street purposes granted to the City of Fresno recorded November 24, 1986 as Document No. 86136575 of Official Records of Fresno County.

Note

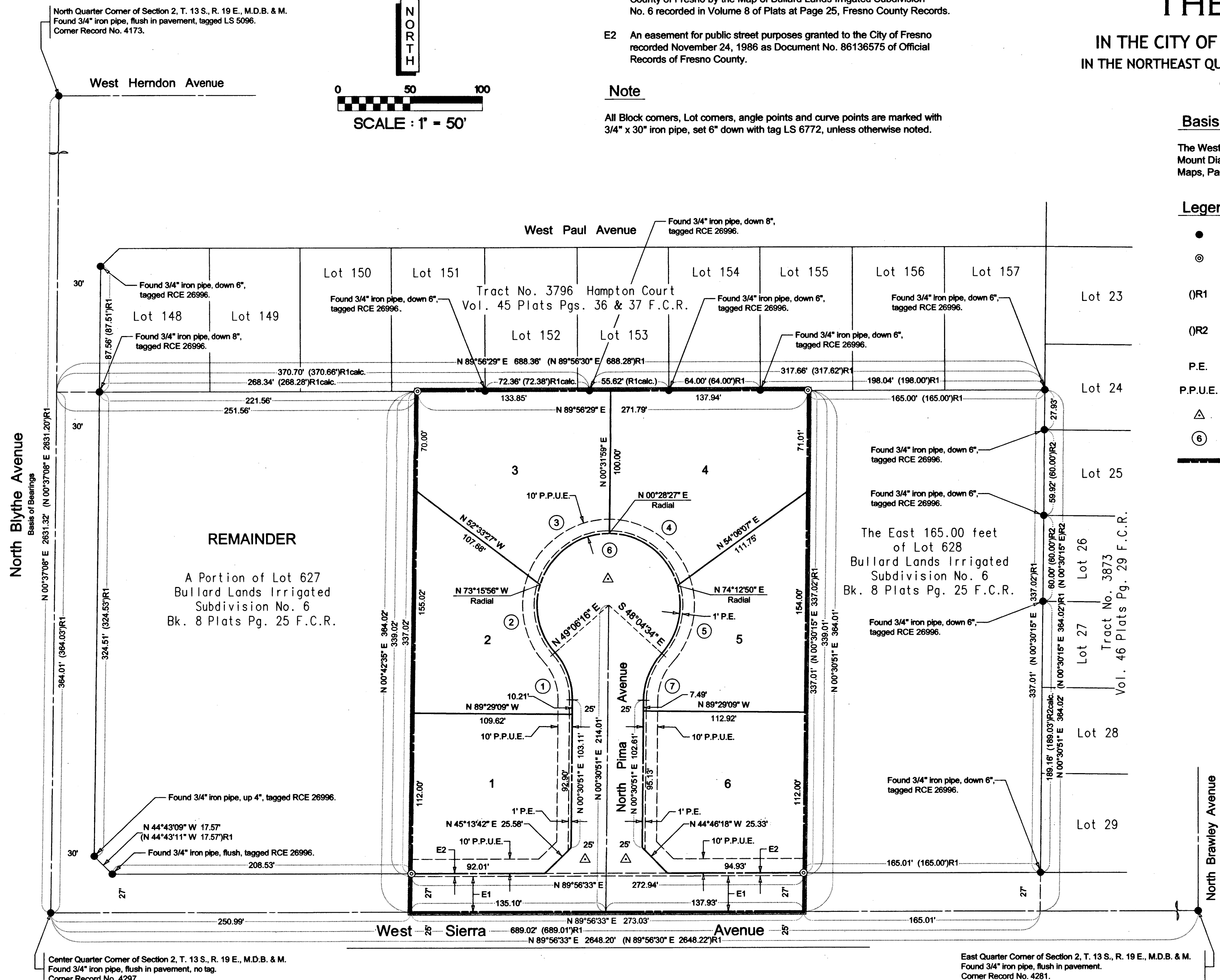
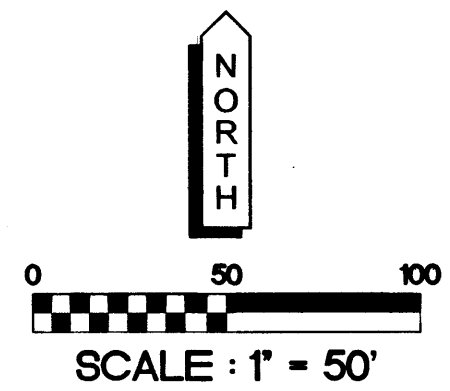
All Block corners, Lot corners, angle points and curve points are marked with 3/4" x 30" iron pipe, set 6" down with tag LS 6772, unless otherwise noted.

Basis of Bearings

The West line of the Northeast quarter of Section 2, Township 13 South, Range 19 East, Mount Diablo Base and Meridian as per TRACT NO. 3796 recorded in Volume 45 of Plat Maps, Pages 36 and 37, Fresno County Records, is taken to be North 00° 37' 08" East.

Legend

- Monument found and accepted as noted.
- ⊙ Set 3/4" x 30" iron pipe, up 4" in 6" diameter x 30" P.C.C. monument, down 6" with tag LS 6772 or as noted.
- (R1) Record data per TRACT NO. 3796 - Volume 45 of Plats at Pages 36 and 37, Fresno County Records.
- (R2) Record data per TRACT NO. 3973 - Volume 46 of Plats at Page 29, Fresno County Records.
- P.E. Indicates Pedestrian Easement now offered for dedication for public use.
- P.P.U.E. Indicates Planting and Public Utility Easement now offered for dedication for public use.
- △ Indicates area now offered for dedication for Public Street purposes.
- ⊙ Indicates Curve Data reference.
- The shaded Blue Border indicates the limits of the Subdivision.



CURVE DATA			
No.	Radius	Delta	Length
1	50.00'	41°24'35"	36.14'
2	50.00'	57°37'48"	50.29'
3	50.00'	73°44'23"	64.35'
4	50.00'	73°44'23"	64.35'
5	50.00'	57°42'36"	50.36'
6	50.00'	262°49'10"	229.35'
7	50.00'	41°24'35"	36.14'

North Quarter Corner of Section 2, T. 13 S., R. 19 E., M.D.B. & M.
 Found 3/4" iron pipe, flush in pavement, tagged LS 5096.
 Corner Record No. 4173.

Center Quarter Corner of Section 2, T. 13 S., R. 19 E., M.D.B. & M.
 Found 3/4" iron pipe, flush in pavement, no tag.
 Corner Record No. 4297.

East Quarter Corner of Section 2, T. 13 S., R. 19 E., M.D.B. & M.
 Found 3/4" iron pipe, flush in pavement.
 Corner Record No. 4281.