



Prepared on Thu Oct 18 01:26:32 2018

Street Names, Addresses and (Lot Numbers) for T4384



TRACT No. 4384

Phase 1 of Tentative Tract No. 4384

IN THE CITY OF FRESNO, FRESNO COUNTY, CALIFORNIA
 SURVEYED AND PLATTED BY R. W. GREENWOOD ASSOCIATES, INC.
 CIVIL ENGINEERING - LAND SURVEYING, 2558 EAST OLIVE AVENUE, FRESNO, CALIFORNIA, 93701, PHONE (209) 268-7831
JUNE, 1994 **SHEET 2 OF 2 SHEETS**

LEGEND

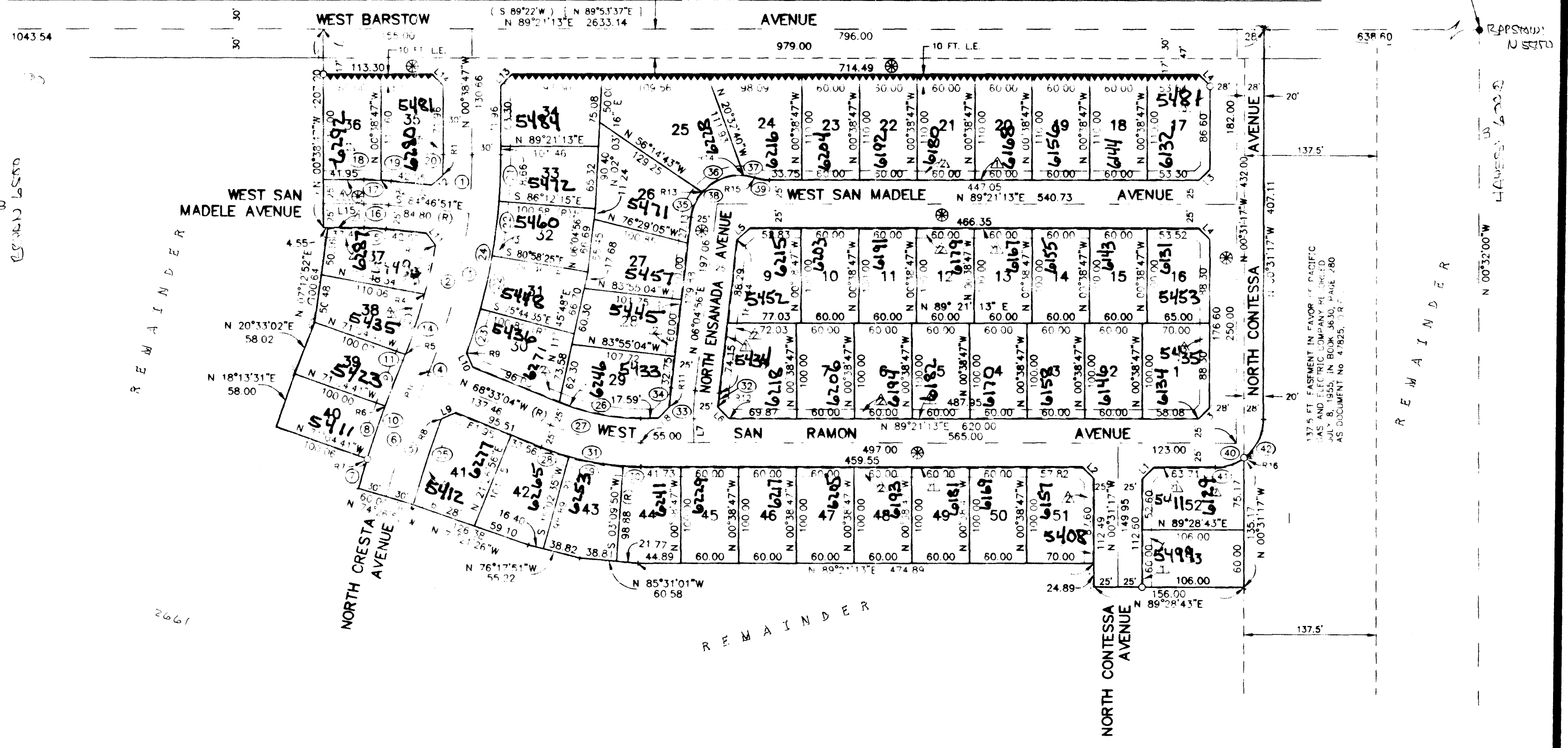
- THE BLUE BORDER INDICATES THE LIMITS OF THIS SUBDIVISION.
- MONUMENTS FOUND AND ACCEPTED, AS NOTED.
- SET 3/4" IRON PIPE, 30" LONG, 4" UP IN 6" DIA. X 30" P.C.C. MONUMENT, 6" BELOW GROUND SURFACE, TAGGED R.C.E. 12406.
- 10 FT. L.E. INDICATES 10 FT. LANDSCAPE EASEMENT NOW OFFERED FOR DEDICATION FOR PUBLIC USE.
- ▲ INDICATES 1 FT. PEDESTRIAN EASEMENT NOW OFFERED FOR DEDICATION FOR PUBLIC USE.
- ▲ INDICATES 10' PLANTING & PUBLIC UTILITY EASEMENT NOW OFFERED FOR DEDICATION FOR PUBLIC USE.
- ⊗ INDICATES AREA NOW OFFERED FOR DEDICATION FOR PUBLIC STREET PURPOSES.
- ▲ INDICATES 10 FT. PUBLIC UTILITY EASEMENT NOW OFFERED FOR DEDICATION FOR PUBLIC USE.
- ▲ INDICATES RELINQUISHMENT OF DIRECT VEHICULAR ACCESS RIGHTS.
- () INDICATES RECORD DATA PER THE MAP RECORDED IN BOOK 10 OF RECORD OF SURVEYS AT PAGE 58, FRESNO COUNTY RECORDS.
- ② (123) REFER TO CURVE TABLE
- R123 REFER TO RADIAL TABLE.
- (R) INDICATES RADIAL BEARING
- L123 REFER TO LINE TABLE.

CENTER 1/4 CORNER OF SECTION 9, T. 13 S., R. 19 E. FOUND 1 1/4" IRON PIPE, 6" DIA., TAGGED LS 2931
 TIES ON FILE WITH THE FRESNO COUNTY SURVEYOR.

30 FT. PUBLIC ROAD EASEMENT GRANTED TO THE COUNTY OF FRESNO PER DEED RECORDED NOVEMBER 5, 1904, IN VOLUME 328, PAGE 11 OF DEEDS, FRESNO COUNTY RECORDS.

OFFICIAL ADDRESS NUMBERS
 WHICH APPEARS ON THIS PAGE MUST BE INSTALLED BEFORE FINAL INSPECTION AS PER SECTION 12-1304 F.M.C. MINIMUM SIZE 4" HIGH WITH 1/4" STROKE
 ISSUED BY *[Signature]* DATE **8-29-96**

EAST 1/4 CORNER OF SECTION 9, T. 13 S., R. 19 E. FOUND 1 1/4" IRON PIPE, 6" DIA., TAGGED R.C.E. 12406.
 TIES ON FILE WITH THE FRESNO COUNTY SURVEYOR.



No.	Radial
R-1	N 89°21'13"E
R-2	N 89°21'13"E
R-3	N 89°21'13"E
R-4	N 89°21'13"E
R-5	N 89°21'13"E
R-6	N 89°21'13"E
R-7	N 89°21'13"E
R-8	N 89°21'13"E
R-9	N 89°21'13"E
R-10	N 89°21'13"E
R-11	N 89°21'13"E
R-12	N 89°21'13"E
R-13	N 89°21'13"E
R-14	N 89°21'13"E
R-15	N 89°21'13"E
R-16	N 89°21'13"E
R-17	N 89°21'13"E

No.	Radius	Delta	Length	Tangent	Chord
1	600.00	05°51'56"	19.43	86.53	91.40
2	600.00	16°24'44"	17.87	86.53	171.28
3	600.00	22°16'40"	231.39	119.14	231.83
4	1200.00	00°10'55"	4.12	3.06	4.12
5	1200.00	05°51'48"	133.28	62.70	133.32
6	1200.00	26°04'45"	131.40	62.77	131.44
7	1330.00	01°51'58"	31.59	14.90	31.59
8	1330.00	02°30'30"	56.01	29.11	56.30
9	1330.00	02°51'45"	50.39	25.50	50.38
10	1330.00	06°04'45"	140.58	70.36	140.52
11	570.00	06°43'30"	66.18	33.52	66.15
12	570.00	06°39'10"	66.18	33.52	66.15
13	570.00	05°21'40"	53.33	26.69	53.31
14	570.00	12°43'20"	126.57	63.54	126.31
15	225.00	05°51'56"	23.03	11.53	23.02
16	250.00	05°51'56"	25.59	12.81	25.58
17	275.00	05°51'56"	28.15	14.09	28.14
18	275.00	03°45'46"	18.06	9.03	18.06
19	275.00	02°06'10"	10.09	5.05	10.09
20	570.00	02°10'32"	21.64	10.82	21.64
21	630.00	04°26'32"	48.84	24.43	48.83
22	630.00	05°13'50"	57.51	28.78	57.49
23	630.00	04°24'10"	48.41	24.22	48.40
24	630.00	19°18'22"	212.28	107.16	211.28
25	1265.00	04°14'04"	93.49	46.77	93.47
26	225.00	22°05'43"	86.72	43.93	86.23
27	250.00	22°05'43"	96.41	48.81	95.81
28	275.00	06°04'21"	30.75	15.39	30.73
29	275.00	11°52'45"	57.02	28.67	56.97
30	275.00	04°48'17"	18.29	9.15	18.28
31	275.00	22°05'43"	106.05	53.69	105.39
32	225.00	03°34'14"	14.02	7.01	14.02
33	250.00	06°43'43"	29.30	14.70	29.24
34	275.00	04°08'42"	19.89	9.95	19.89
35	50.00	33°06'28"	28.89	14.86	28.49
36	50.00	55°52'32"	48.76	26.57	46.85
37	50.00	13°09'08"	10.90	5.47	10.97
38	50.00	10°57'58"	88.85	61.18	18.87
39	50.00	18°11'41"	15.88	8.01	15.87
40	50.00	89°52'50"	78.43	49.89	70.63
41	50.00	36°44'42"	32.67	16.71	32.62
42	50.00	57°01'48"	46.36	25.00	44.72

LINE	Bearing	Dist.
1	N 44°24'58"E	17.56
2	S 45°35'02"E	17.52
3	S 44°34'58"W	16.56
4	S 44°35'03"W	16.53
5	N 47°43'04"E	18.54
6	N 44°51'25"W	17.29
7	S 00°38'47"E	25.00
8	S 45°01'28"W	17.74
9	N 65°45'01"E	16.34
10	N 24°40'47"W	16.87
11	S 38°13'48"E	16.09
12	S 42°40'36"W	16.10
13	N 44°51'13"E	16.55
14	S 45°38'47"E	16.53
15	N 89°11'13"E	41.95
16	N 00°51'17"W	135.17
17	N 89°28'43"E	156.00
18	N 00°51'17"W	24.89
19	N 85°31'01"W	60.58
20	N 76°11'51"W	55.22
21	N 71°26'26"W	156.38
22	N 74°26'52"W	60.00
23	N 71°04'41"W	100.06
24	N 18°27'31"E	58.00
25	N 20°13'02"E	58.02
26	N 07°12'52"E	100.64
27	N 89°21'13"E	4.55
28	N 00°38'47"W	207.00

NOTE:
 SET 3/4" IRON PIPE, 30" LONG, 6" DOWN, TAGGED R.C.E. 12406 AT ALL LOT CORNERS, ANGLE POINTS AND THE BEGINNING AND END OF ALL CURVES.

