



Prepared on Mon Oct 22 16:45:19 2018

# Street Names, Addresses and (Lot Numbers) for T4357



- LEGEND:**
- MONUMENT FOUND AND ACCEPTED AS NOTED
  - ⊙ - SET 3/4" IRON PIPE, 30" LONG, 4" UP, IN P.C.C. MONUMENT, DOWN 6" BELOW GROUND TAGGED R.C.E. 10782
  - ▲ - NOW OFFERED FOR DEDICATION FOR PUBLIC STREET PURPOSES
  - ==== INDICATES RELINQUISHMENT OF DIRECT ACCESS RIGHTS
  - PE - PEDESTRIAN EASEMENT NOW OFFERED FOR DEDICATION FOR PUBLIC USE
  - PUE - PUBLIC UTILITY EASEMENT NOW OFFERED FOR DEDICATION FOR PUBLIC USE
  - PPUE - PLANTING AND PUBLIC UTILITY EASEMENT NOW OFFERED FOR DEDICATION FOR PUBLIC USE
  - ▲ - PREVIOUSLY DEDICATED FOR PUBLIC STREET PURPOSES PER MAP OF TRACT NO. 4356 RECORDED IN VOL. 54, PAGES 49-52, F.C.R.
  - ▲ - PREVIOUSLY DEEDED FOR PUBLIC STREET PURPOSES PER DOC. NO. 90101411 RECORDED AUGUST 24, 1990. O.R.F.C.
  - ▲ - PREVIOUSLY DEEDED FOR PUBLIC STREET PURPOSES PER DOC. NO. 92089327 RECORDED JUNE 25, 1992 O.R.F.C.

# MAP OF TRACT NO. 4357

PHASE I OF TENTATIVE TRACT NO. 4357  
(A PLANNED DEVELOPMENT)

IN THE CITY OF FRESNO, FRESNO COUNTY, CALIFORNIA  
SHEET 3 OF 3 SHEETS

SURVEYED AND PLATTED OCTOBER, 1994 BY RABE ENGINEERING INC.

CIVIL ENGINEERS-LAND SURVEYORS 2021 N. GATEWAY BLVD., FRESNO CALIFORNIA 93727

(209) 252-7223

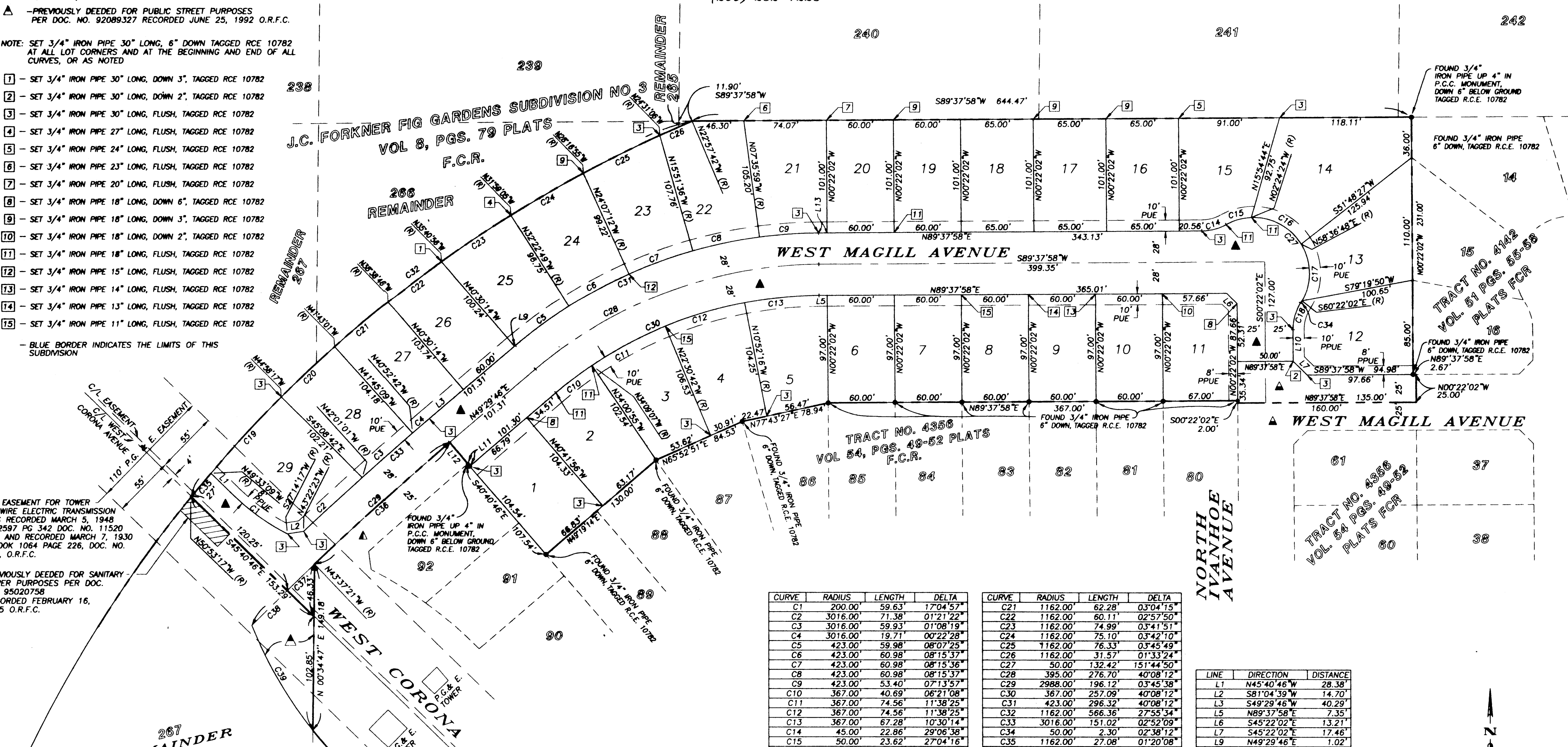
NOTE: SET 3/4" IRON PIPE 30" LONG, 6" DOWN TAGGED R.C.E. 10782 AT ALL LOT CORNERS AND AT THE BEGINNING AND END OF ALL CURVES, OR AS NOTED

- 1 - SET 3/4" IRON PIPE 30" LONG, DOWN 3", TAGGED R.C.E. 10782
- 2 - SET 3/4" IRON PIPE 30" LONG, DOWN 2", TAGGED R.C.E. 10782
- 3 - SET 3/4" IRON PIPE 30" LONG, FLUSH, TAGGED R.C.E. 10782
- 4 - SET 3/4" IRON PIPE 27" LONG, FLUSH, TAGGED R.C.E. 10782
- 5 - SET 3/4" IRON PIPE 24" LONG, FLUSH, TAGGED R.C.E. 10782
- 6 - SET 3/4" IRON PIPE 23" LONG, FLUSH, TAGGED R.C.E. 10782
- 7 - SET 3/4" IRON PIPE 20" LONG, FLUSH, TAGGED R.C.E. 10782
- 8 - SET 3/4" IRON PIPE 18" LONG, DOWN 6", TAGGED R.C.E. 10782
- 9 - SET 3/4" IRON PIPE 18" LONG, DOWN 3", TAGGED R.C.E. 10782
- 10 - SET 3/4" IRON PIPE 18" LONG, DOWN 2", TAGGED R.C.E. 10782
- 11 - SET 3/4" IRON PIPE 18" LONG, FLUSH, TAGGED R.C.E. 10782
- 12 - SET 3/4" IRON PIPE 15" LONG, FLUSH, TAGGED R.C.E. 10782
- 13 - SET 3/4" IRON PIPE 14" LONG, FLUSH, TAGGED R.C.E. 10782
- 14 - SET 3/4" IRON PIPE 13" LONG, FLUSH, TAGGED R.C.E. 10782
- 15 - SET 3/4" IRON PIPE 11" LONG, FLUSH, TAGGED R.C.E. 10782

- BLUE BORDER INDICATES THE LIMITS OF THIS SUBDIVISION

10' EASEMENT FOR TOWER AND WIRE ELECTRIC TRANSMISSION LINES RECORDED MARCH 5, 1948 W. 2597 PG 342 DOC. NO. 11520 W.P.C. AND RECORDED MARCH 7, 1930 N BOOK 1064 PAGE 226, DOC. NO. 422, O.R.F.C.

PREVIOUSLY DEEDED FOR SANITARY SEWER PURPOSES PER DOC. NO. 95020758 RECORDED FEBRUARY 16, 1995 O.R.F.C.



CURVE	RADIUS	LENGTH	DELTA
C1	200.00'	59.63'	17°04'57"
C2	3016.00'	71.38'	01°21'22"
C3	3016.00'	59.93'	01°08'19"
C4	3016.00'	19.71'	00°22'28"
C5	423.00'	59.98'	08°07'25"
C6	423.00'	60.98'	08°15'37"
C7	423.00'	60.98'	08°15'36"
C8	423.00'	60.98'	08°15'37"
C9	423.00'	53.40'	07°13'57"
C10	367.00'	40.69'	06°21'08"
C11	367.00'	74.56'	11°38'25"
C12	367.00'	74.56'	11°38'25"
C13	367.00'	67.28'	10°30'14"
C14	45.00'	22.86'	29°06'38"
C15	50.00'	23.62'	27°04'16"
C16	50.00'	53.25'	61°01'12"

CURVE	RADIUS	LENGTH	DELTA
C21	1162.00'	62.28'	03°04'15"
C22	1162.00'	60.11'	02°57'50"
C23	1162.00'	74.99'	03°41'51"
C24	1162.00'	75.10'	03°42'10"
C25	1162.00'	76.33'	03°45'49"
C26	1162.00'	31.57'	01°33'24"
C27	50.00'	132.42'	151°44'50"
C28	395.00'	276.70'	40°08'12"
C29	2988.00'	196.12'	03°45'38"
C30	367.00'	257.09'	40°08'12"
C31	423.00'	296.32'	40°08'12"
C32	1162.00'	566.36'	27°55'34"
C33	3016.00'	151.02'	02°52'09"
C34	50.00'	2.30'	02°38'12"
C35	1162.00'	27.08'	01°20'08"
C36	2088.00'	162.63'	03°07'07"

LINE	DIRECTION	DISTANCE
L1	N45°40'46"W	28.38'
L2	S81°04'39"W	14.70'
L3	S49°29'46"W	40.29'
L5	N89°37'58"E	7.35'
L6	S45°22'02"E	13.21'
L7	S45°22'02"E	17.46'
L9	N49°29'46"E	1.02'
L10	N00°22'02"W	28.42'

