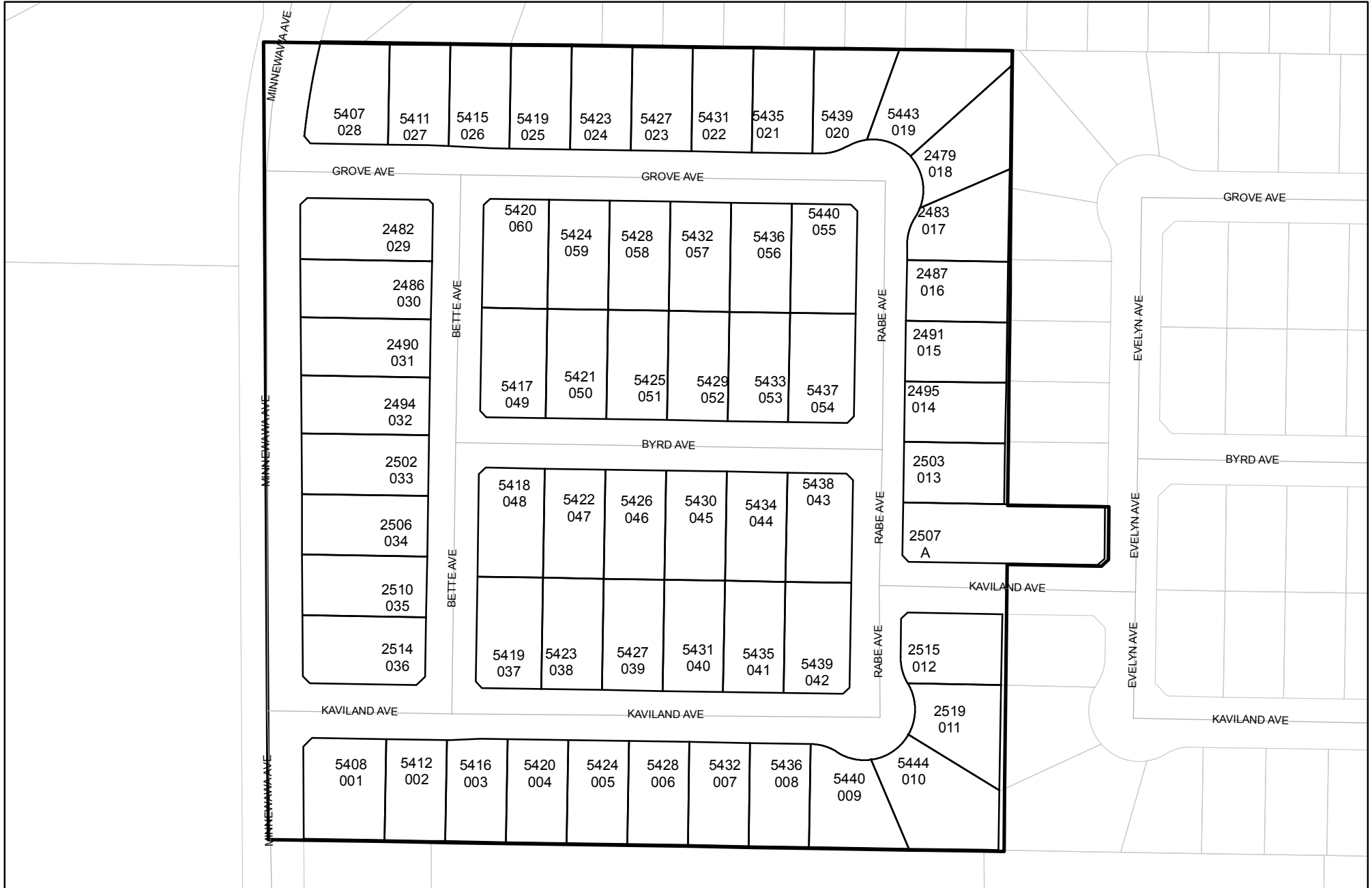




Prepared on Thu Oct 18 01:28:30 2018

Street Names, Addresses and (Lot Numbers) for T4188



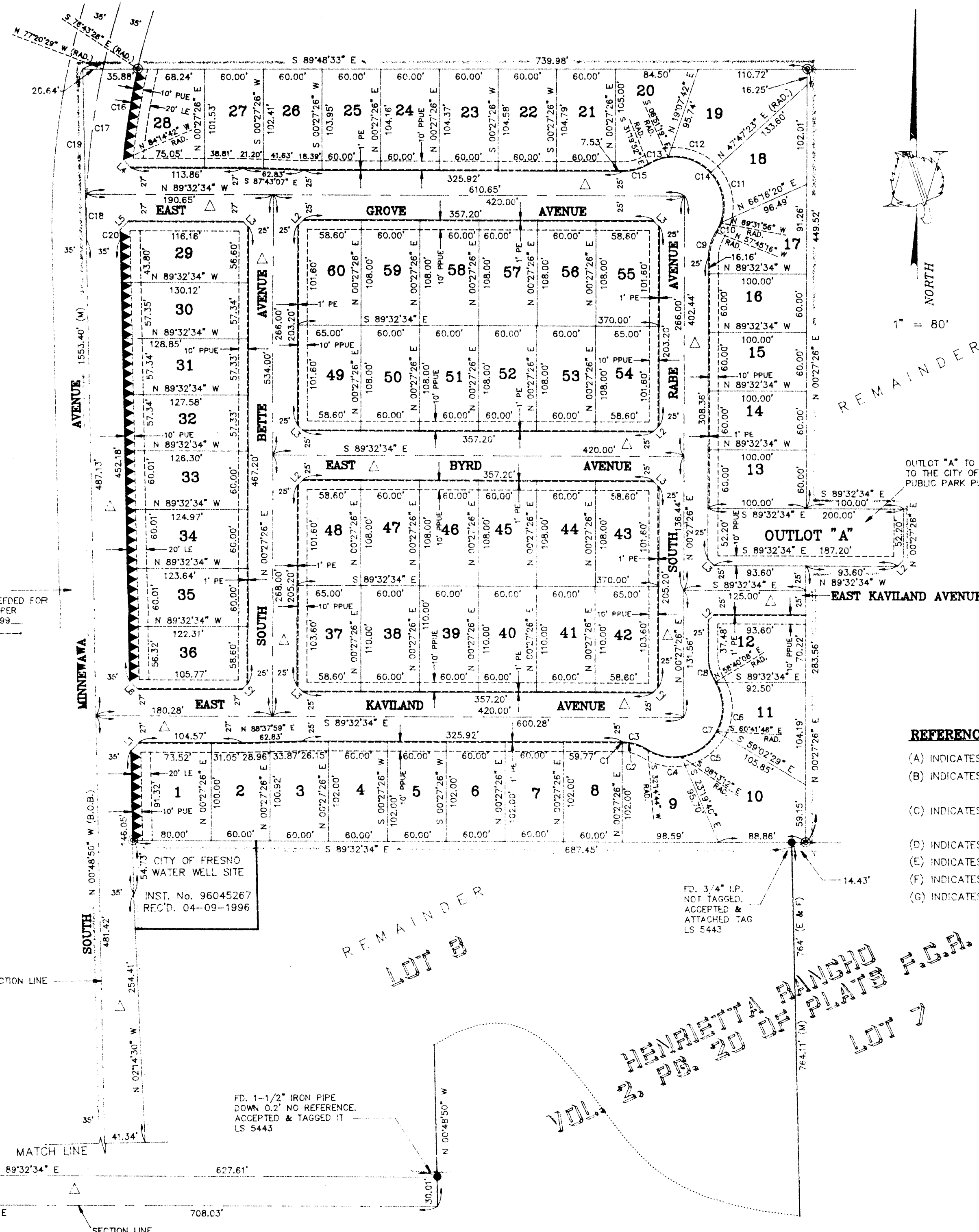
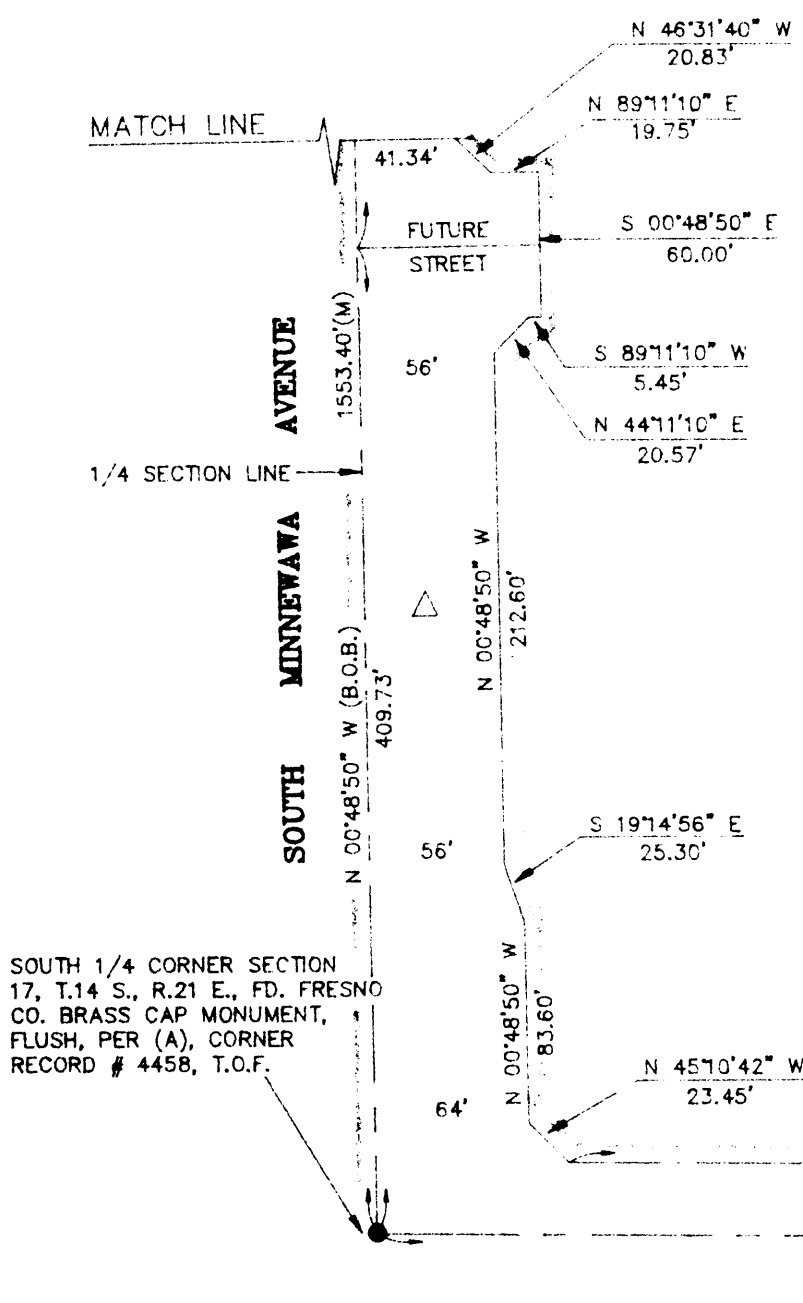
LINE TABLE

LINE	DIRECTION	DISTANCE
L1	N 44°48'18" E	12.17'
L2	N 45°27'26" E	9.05'
L3	S 44°32'34" E	9.05'
L4	S 42°04'06" E	11.76'
L5	N 45°25'02" E	12.30'
L6	N 45°10'42" W	12.44'
L7	N 02°14'30" W	254.41'
L8	N 46°31'40" W	20.83'
L9	N 89°11'10" E	19.75'
L10	S 00°48'50" E	60.00'
L11	S 89°11'10" W	5.45'
L12	N 44°11'10" E	20.57'
L13	N 00°48'50" W	212.60'
L14	S 19°14'56" E	25.30'
L15	N 00°48'50" W	83.60'
L16	N 45°10'42" W	23.45'

CURVE TABLE

CURVE	RADIUS	LENGTH	DELTA
C1	50.00'	0.23'	00°15'42"
C2	50.00'	27.51'	31°31'36"
C3	50.00'	27.74'	31°47'18"
C4	50.00'	35.31'	40°27'57"
C5	50.00'	45.79'	52°28'33"
C6	50.00'	52.91'	60°38'08"
C7	50.00'	134.01'	153°34'36"
C8	50.00'	27.74'	31°47'18"
C9	50.00'	27.74'	31°47'18"
C10	50.00'	10.28'	11°48'40"
C11	50.00'	54.70'	62°40'41"
C12	50.00'	47.69'	54°38'43"
C13	50.00'	21.36'	24°28'33"
C14	50.00'	134.03'	153°34'37"
C15	50.00'	27.74'	31°47'18"
C16	715.00'	93.86'	07°31'17"
C17	750.00'	129.38'	09°53'03"
C18	750.00'	47.00'	03°35'25"
C19	750.00'	176.38'	13°28'28"
C20	715.00'	10.51'	00°50'32"

RIGHT-OF-WAY WEST OF CENTERLINE PREVIOUSLY DEEDED FOR PUBLIC STREET PURPOSES PER DEED RECORDED AS DOCUMENT No. 199 O.R.F.C.



LEGEND :

- ⊙ INDICATES SET 3/4" x 30" IRON PIPE, UP 4" IN 6" DIAMETER x 30" CONCRETE MONUMENT DOWN 6" AND TAGGED L.S. 5443, UNLESS OTHERWISE NOTED.
- INDICATES MONUMENT SET - A 3/4" IRON PIPE TAGGED L.S. 5443, UNLESS OTHERWISE NOTED.
- INDICATES MONUMENT FOUND - AS NOTED
- (M) DISTANCE MEASURED ON THIS SURVEY.
- (CALC) DISTANCE CALCULATED ON THIS SURVEY.
- (B.O.B.) BASIS OF BEARINGS
- △ INDICATES AREA NOW OFFERED FOR DEDICATION FOR PUBLIC USE.
- PPUE INDICATES PLANTING AND PUBLIC UTILITY EASEMENT, NOW OFFERED FOR DEDICATION FOR PUBLIC USE.
- PE INDICATES PEDESTRIAN EASEMENT, NOW OFFERED FOR DEDICATION FOR PUBLIC USE.
- PUE INDICATES PUBLIC UTILITY EASEMENT, NOW OFFERED FOR DEDICATION FOR PUBLIC USE.
- LE INDICATES LANDSCAPE EASEMENT, NOW OFFERED FOR DEDICATION FOR PUBLIC USE.
- F.C.R. INDICATES FRESNO COUNTY RECORDS.
- O.R.F.C. INDICATES OFFICIAL RECORDS FRESNO COUNTY.
- ▲ INDICATES RELINQUISHMENT OF DIRECT VEHICULAR ACCESS RIGHTS.
- THE SHADED BLUE BORDER INDICATES THE LIMITS OF THIS SUBDIVISION.

BASIS OF BEARINGS :

NORTH 00°48'50" WEST ALONG THE WEST LINE OF THE SOUTHEAST QUARTER OF SECTION 17, TOWNSHIP 14 SOUTH, RANGE 21 EAST, MOUNT DIABLO MERIDIAN, AS SHOWN IN BOOK 36 OF RECORD OF SURVEYS AT PAGE 88, FRESNO COUNTY RECORDS.

GENERAL NOTES :


1. ALL BEARINGS AND DISTANCES SHOWN ARE MEASURED ON THIS SURVEY, UNLESS OTHERWISE NOTED.
2. ALL DISTANCES AND DIMENSIONS SHOWN ARE IN FEET AND DECIMALS THEREOF.
3. ALL RECORD INFORMATION IS FROM FRESNO COUNTY RECORDS, UNLESS OTHERWISE NOTED.

REFERENCES :

- (A) INDICATES RECORD DATA PER BOOK 36 OF RECORD OF SURVEYS, PAGE 88, F.C.R.
- (B) INDICATES RECORD DATA PER TRACT No. 4606 RECORDED IN VOLUME 57 OF PLATS, PAGES 64, 65 & 66, F.C.R.
- (C) INDICATES RECORD DATA PER TRACT No. 4377 RECORDED IN VOLUME 57 OF PLATS, PAGES 33,34 & 35, F.C.R.
- (D) INDICATES RECORD DATA PER VOLUME 10 OF RECORD OF SURVEYS, PAGE 29, F.C.R.
- (E) INDICATES RECORD DATA PER GRANT DEED INST. No. 94186229, RECORDED 12-12-1994, O.R.F.C.
- (F) INDICATES RECORD DATA PER GRANT DEED INST. No. 91049781, RECORDED 04-26-1991, O.R.F.C.
- (G) INDICATES RECORD DATA PER AFFIDAVIT-DEATH OF JOINT TENANT INST. No. 89057919, RECORDED 06-01-1989, O.R.F.C.

VOL. 2, PG. 20 OF PLATS F.C.R.
 HENRIETTA RANCHO
 LOT 7

MAP OF
TRACT NO. 4188
 PHASE 1 OF TENTATIVE TRACT NO. 4188
 IN THE CITY OF FRESNO, FRESNO COUNTY, CALIFORNIA
 SURVEYED AND PLATTED IN DECEMBER, 1996
 BY ASPEN SURVEY COMPANY
 CONSISTING OF SHEETS
 SHEET OF SHEETS


ASPEN SURVEY COMPANY
 801 17th STREET, SUITE 'P', MODESTO, CA. 95354
 Ph: (209) 526-9724 Fax: (209) 526 0472